

TC-1 Pro

CONTENTS

- INTRODUCTION2
 - Welcome 2
 - Safety 2
 - Supplied items 3
- INSTALLATION4
 - Mounting 4
 - Connections 5
 - Power adapter 6
- CONFIGURATION7
 - Switching between on and standby 7
 - Button clicks 7
 - Creating presets 7
- OPERATION8
 - Using the panel 8
- FURTHER INFORMATION9
 - Specifications 9
 - Dimensions 10
 - Limited product warranty 12

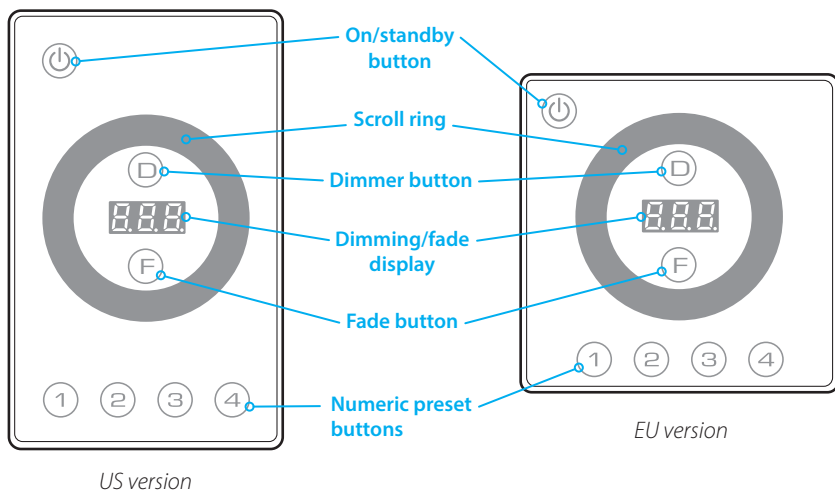
INTRODUCTION

WELCOME

Welcome to the TC-1 Pro panel from Acclaim Lighting. This simple wall-mount DMX controller is designed for controlling single color lighting fixtures. It features combined digital DMX and analog 0-10V outputs.

The clean and tidy front panel uses a touch sensitive scroll ring and buttons to simplify programming and operation. Four presets can be created for quick selection. A 3-digit display shows the dimming level and fade time information.

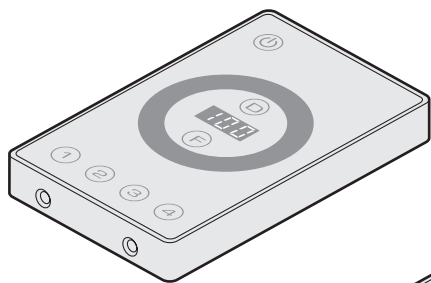
A compact power supply is provided with each panel.



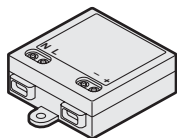
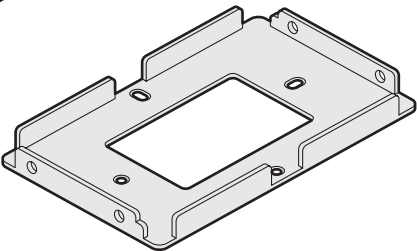
SAFETY

- Ensure that the power input is supplied from a correctly fused and environmentally protected location.

SUPPLIED ITEMS



**TC-1 Pro panel
main body plus back plate
(US model shown)**



12VDC power adapter

INSTALLATION

TC-1 Pro panels are available in two formats: US and EU, to suit the differing single gang electrical box standards in those regions. See "Dimensions" on page 10.

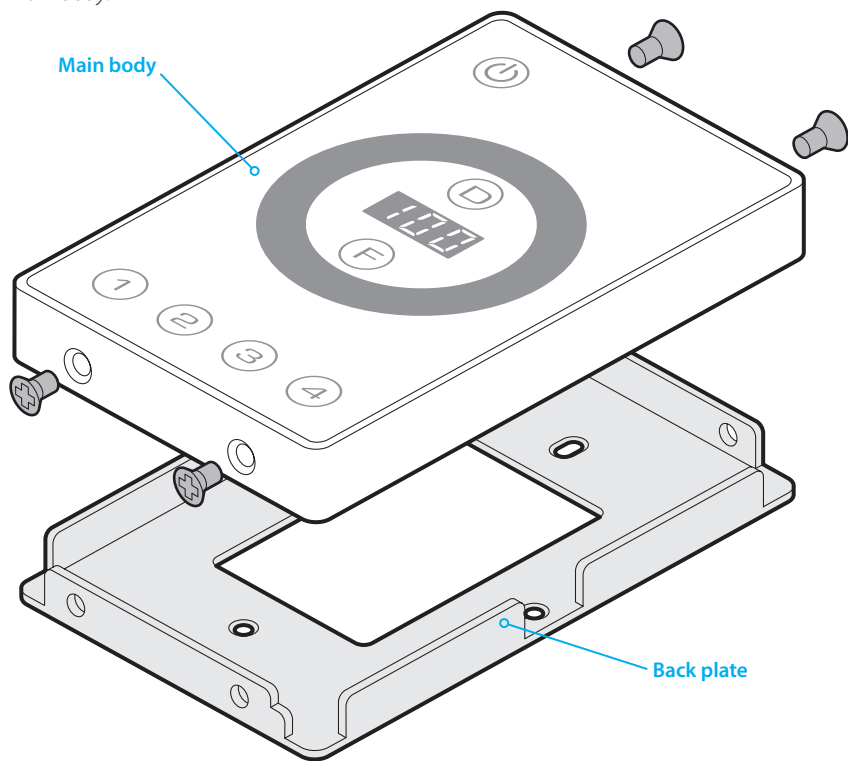
A compact 12VDC power adapter is supplied with each panel and this requires a fused mains (100 to 240VAC, 6W) supply.

MOUNTING

TO OPEN THE PANEL

- 1 Remove the four small screws from the top and bottom edges of the panel.
- 2 Gently pull the main body of the panel away from the back plate.

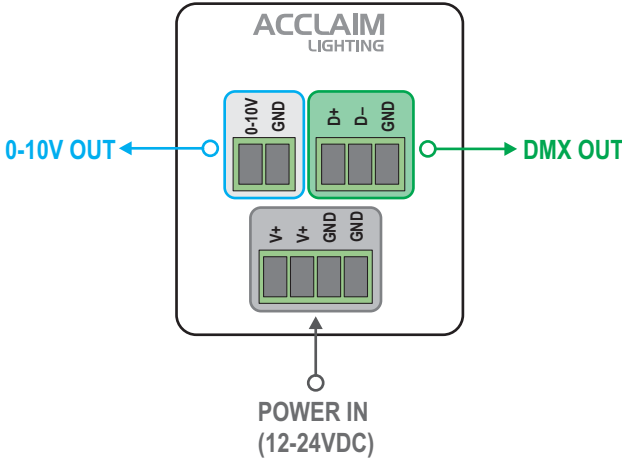
Note: It may be necessary to gently lever the back plate away from the main body with a small implement. If you do so, take great care not to damage any of the micro circuitry inside the main body.



- 3 Fix the back plate to a suitable single gang electrical wall box (not supplied) and, if possible, locate the supplied 12VDC power adapter inside the wall box.
- 4 Make all necessary connections and fit the main body to the back plate.
- 5 Insert the four screws removed earlier.

CONNECTIONS

The panel has four connector blocks at its rear, with the following functions:



POWER IN

Each panel requires a DC power input of between 12 and 24VDC. The panel consumes only 1.5W.

DMX OUT

Provides a link to DMX-enabled lighting fixtures. Use the GND, D- and D+ terminals to send control data to the fixtures.

DMX addressing: The TC-1 Pro controls a single fixture channel but outputs the same values on all 512 DMX channels.

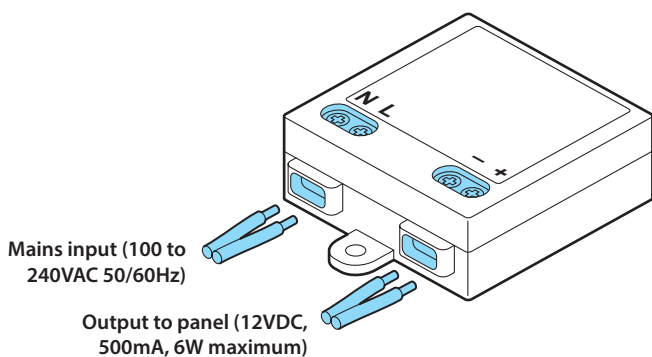
0-10V OUT

Provides a link to 0-10V (current sink) lighting fixtures.

*Note: There are two forms of 0-10V analog control: **Current source** and **current sink**. The former was commonly used for theatrical dimming prior to the advent of digital techniques, such as DMX; the latter is used mainly as a control technique for fluorescent dimming ballasts. The primary difference between the two schemes lies with where the control voltage should be generated: **Current source** requires the controlling device to provide (source) the control voltage; whereas **Current sink** mandates that the controlled fixture must provide the voltage. The TC-1 Pro supports the **Current source** variant only.*

POWER ADAPTER

The supplied compact power adapter can accept mains inputs from 100 to 240VAC, 50/60Hz and provides 12VDC at a maximum of 6W.



The power adapter is a Class II, double insulated device and does not require a ground wire.

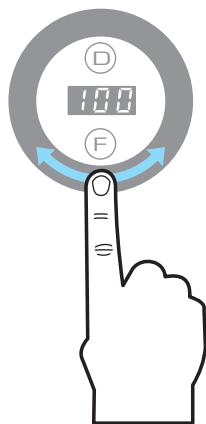
CONFIGURATION

The TC-1 Pro panel uses touch sensitive buttons plus a touch sensitive scroll ring, which allows you to easily increase and decrease settings by running your finger around it in clockwise or counterclockwise directions.

At the center of the scroll ring is a three-digit display which shows the dimming and fade values as you adjust them for the fixture(s) being controlled by the panel.

At the base of the panel are four numeric preset buttons which provide quick access to your pre-programmed dimming/fade levels.

Each button press and scroll ring movement is accompanied by an audible click. If required, you can disable the clicks to make the panel run silently. See “Button clicks” below for details.



SWITCHING BETWEEN ON AND STANDBY

Once power is applied, press and hold the  button for **three** seconds to switch the panel between on and standby.

Whenever the panel is in standby, all connected lighting fixtures will be extinguished and the  button will glow dimly to assist with locating it in the dark.

Note: When switched on, the panel will return to whichever mode was running when standby was previously invoked.

BUTTON CLICKS

Each button press (or change of setting using the scroll ring) is accompanied by an audible click and other operations are confirmed using bleeps (in addition to flashing buttons). If required, you can disable the clicks and bleeps so the panel runs silently.

TO TOGGLE THE BUTTON CLICKS

- Press and hold the **1**, **2**, **3** and **4** buttons until either the **F** (Fade) button flashes momentarily or an audible bleep is emitted (depending on whether you are enabling or disabling the button clicks).

CREATING PRESETS

You can create up to four presets to allow users to change lighting states with ease. Each preset contains a mix of a dimmer level (0 to 100%) and a fade time (between 0.01 and 10 seconds). The stored fade time will be used when you change from a previous state to the chosen preset.

TO CREATE A PRESET

Note: The dimming and fading can be adjusted in any order.

- 1 Press and hold the **D** (Dimmer) button for one second, until it illuminates.
- 2 Use the scroll ring to increment (clockwise) or decrement (counter clockwise) the brightness of the lighting fixtures output.
- 3 Press and hold the **F** (Fade) button for one second, until it illuminates.
- 4 Use the scroll ring to increment (clockwise) or decrement (counter clockwise) the fade time of the lighting fixtures output.
- 5 When both parameters are correct, store the result: Press and hold one of the numeric preset buttons for two seconds.

OPERATION

USING THE PANEL

In everyday use, when the panel is switched on, you can affect the controlled fixtures by either recalling a preset and/or by making temporary adjustments.

TO RECALL A PRESET

- 1 Press any of the four numeric preset buttons to recall their saved dimming intensities and fade times.

TO MAKE TEMPORARY ADJUSTMENTS


During operation you can make temporary dimming adjustments to the controlled fixture(s).

- 1 If the **D** (Dimmer) button is not lit, press and hold it for one second.
- 2 Use the scroll ring to adjust the chosen attribute.

Note: The temporary dimming changes you make will remain even when you switch off the panel, but will be overwritten when you next select a preset.

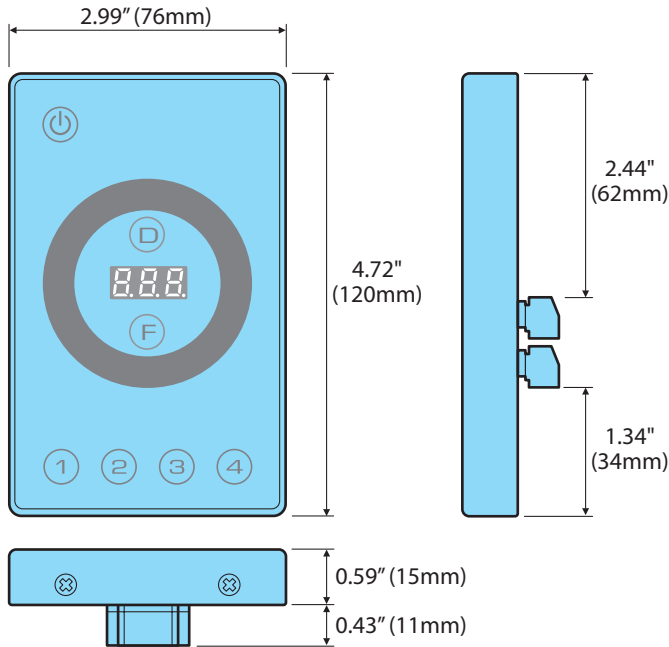
FURTHER INFORMATION

SPECIFICATIONS

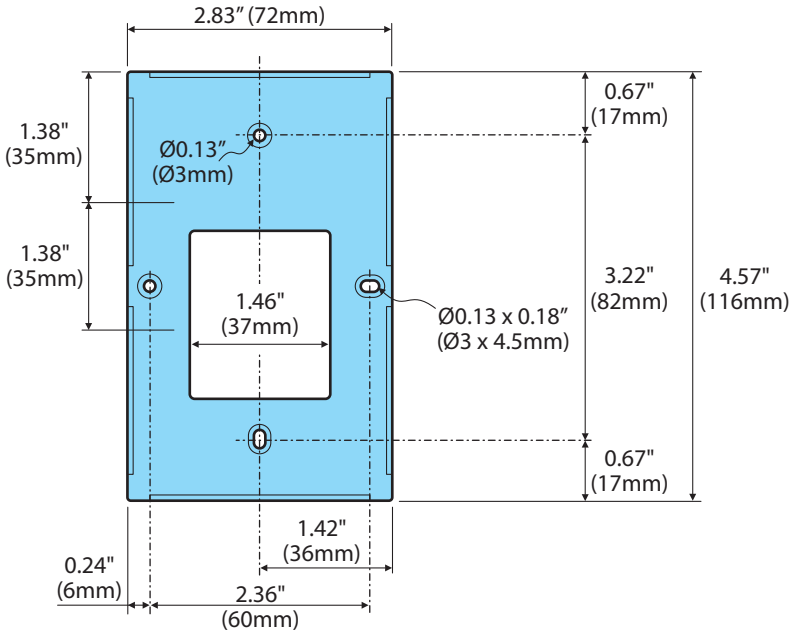
| | |
|-----------------------|---|
| DMX output | 1 channel, sent to all 512 addresses |
| 0-10V output | Current source |
| Interface | Touch sensitive wall panel |
| Audio feedback | Tones can be toggled by holding buttons 1 to 4 simultaneously |
| Mounting | Single gang US or EU-type electrical box (not included) |
| Material | Aluminum housing, glass panel |
| Finish | White |
| IP rating | IP20, dry location |
| Operating voltage | 12-24VDC, 500mA (6W power adapter included, 100-240VAC) |
| Operating temperature | 32°F to 104°F (0°C to 40°C) |
| Weight | 0.3 lbs (140g) |
| Certifications |  |

DIMENSIONS

MAIN BODY (US VERSION)

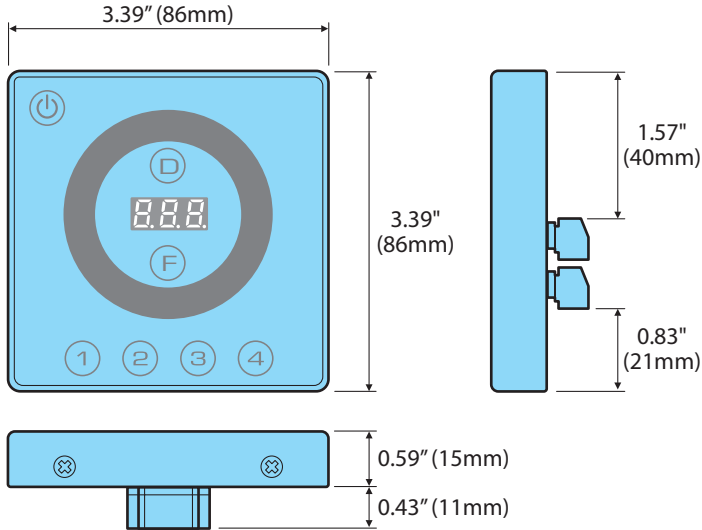


BACK PLATE (US VERSION)

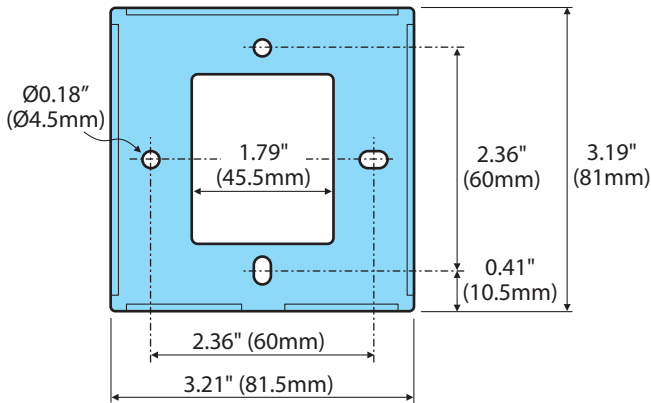


DIMENSIONS (CONT)

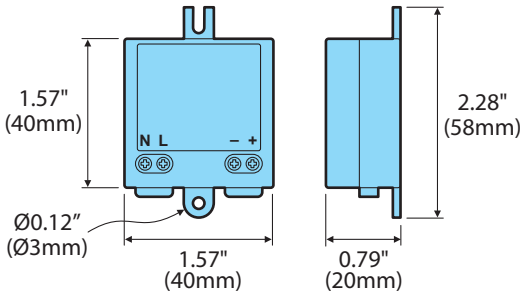
MAIN BODY (EU VERSION)



BACK PLATE (EU VERSION)



POWER SUPPLY



LIMITED PRODUCT WARRANTY

A. Acclaim Lighting™ hereby warrants, to the original purchaser, Acclaim Lighting finished products to be free of manufacturing defects in material and workmanship for a standard period of:

- Fixtures: 5 Years (1,825 days) from the date of purchase.
- Drivers, power supplies and accessories: 5 Years (1,825 days) from the date of purchase.
- Flex Products: 3 Years (1,095 days) from the date of purchase.
- Controllers: 2 Years (730 days) from the date of purchase.

It is the owner's responsibility to establish the date and place of purchase and warranty terms by acceptable evidence, at the time service is sought.

B. For warranty service, send the product only to the Acclaim factory. All shipping charges must be pre-paid. If the requested repairs or service (including parts replacement) are within the terms of this warranty, Acclaim Lighting will pay return shipping charges only to a designated point within the United States. If the entire instrument is sent, it must be shipped in its original package. No accessories should be shipped with the product. If any accessories are shipped with the product, Acclaim Lighting shall have no liability whatsoever for loss of or damage to any such accessories, nor for the safe return thereof. Acclaim reserves the right to replace the item with same or similar product at its discretion.

C. This warranty is void if the serial number has been altered or removed; if the product is modified in any manner which Acclaim concludes, after inspection, affects the reliability of the product; if the product has been repaired or serviced by anyone other than the Acclaim Lighting factory unless prior written authorization was issued to purchaser by Acclaim Lighting; if the product is damaged because not properly maintained as set forth in the instruction manual.

D. This is not a service contract, and this warranty does not include maintenance, cleaning or periodic check-up nor do we guarantee as part of this warranty any lumen performance during period. Parts not covered by this warranty include: fuses, external power supplies, third party items not manufactures by Acclaim lighting. During the period specified above, Acclaim Lighting will replace defective parts at its expense, and will absorb all expenses for warranty service and repair labor by reason of defects in material or workmanship. The sole responsibility of Acclaim Lighting under this warranty shall be limited to the repair of the product, or replacement thereof, including parts, at the sole discretion of Acclaim Lighting. At no time will installation or re-installation or products labor or liability costs will be assumed by Acclaim Lighting. All products covered by this warranty were manufactured after January 1, 2012, and bear identifying serial number marks to that effect.

E. Acclaim Lighting reserves the right to make changes in design and/or improvements upon its products without any obligation to include these changes in any products theretofore manufactured. No warranty, whether expressed or implied, is given or made with respect to any accessory supplied with products describe above. Except to the extent prohibited by applicable law, all implied warranties made by Acclaim Lighting in connection with this product, including warranties of merchantability or fitness, are limited in duration to the warranty period set forth above. And no warranties, whether expressed or implied, including warranties of merchantability or fitness, shall apply to this product after said period has expired.

F. Marine or extreme weather location applications using Acclaim lighting products are subject to a 2 year limited warranty and Acclaim must be notified prior to delivery of units for such applications so that preventative treatment can be made to the products to ensure proper performance and product life with a special marine code coating / sealing process at an additional cost.

G. The consumer's and or dealer's sole remedy shall be such repair or replacement as is expressly provide above; and under no circumstances shall Acclaim Lighting be liable for any loss or damage, direct or consequential, arising out of the use of, or inability to use, this product. This warranty is the only written warranty applicable to Acclaim Lighting products and supersedes all prior warranties and written descriptions of warranty terms and conditions heretofore published.

www.acclaimlighting.com