

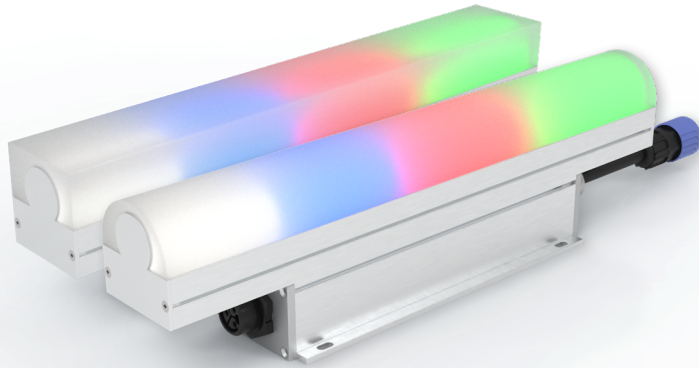
PROJECT

FIRM

ORDER #

TYPE

QTY



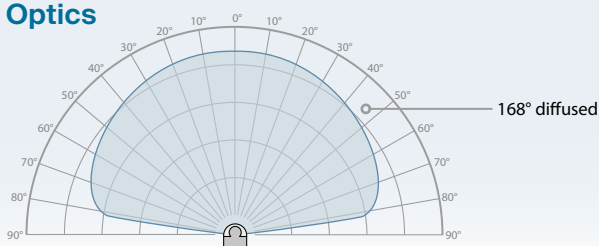
Pixel Bar™ is a direct view fixture that provides individual control of four pixels per linear foot. The diffused lens, available in flat or rounded form, produces an attractive edge blend between each pixel section.

Pixel Bar is available in 1 foot and 4 foot lengths, each with a choice of RGBW, RGBA or Dynamic White emitters. Up to 100 feet (30m) of Pixel Bar units can be arranged in a single run and all units are IP66 rated for wet location use.

Control is achieved using DMX, with RDM for remote configuration. The internal auto-sensing power supply within each unit can accept mains inputs between 100 to 277VAC at 50 or 60Hz.

At a glance

Optics



Emitters

Quad RGBW
(W=3000K)

or

Quad RGBA

or

Dynamic White (DW)
(2700K to 6000K)

Power

100 to
277VAC
50/60Hz

Temperature

-40° F to 122° F
-40° C to 50° C

Runs

100'
(30m)

Protection

Ingress: IP66
(wet location)

Core technology

SpectrumFour
technology

Configure your product

PBA - 24 - T N

Example final code: **PBA-242-DTLN**

Lens profile:

2 = Diffused round
3 = Diffused flat

Length:

A = 1' (305mm)
D = 4' (1220mm)

Emitters:

F = RGBA
L = RGBW (W=3000K)
M = DW (2700K - 6000K)

SCAN
FOR
PRODUCT
PAGE



PROJECT



FIRM

ORDER #

TYPE

QTY

Specifications

Emitters	Spectrum RGBW (W=3000K), RGBA, Dynamic White (2700K-6000K)
Optics	168° (diffused lens)
Output	Up to 100 lumens per linear foot
Lumen maintenance	L ₇₀ 100,000 hours (@ 25° C)
Control	0-100% dimming via wired DMX (with RDM configuration)
Maximum fixtures in series	100' (30m) interconnected
Housing lengths	1' (305mm) or 4' (1220mm)
Operating voltage	100-277VAC, 50/60Hz
Power consumption	1': 8W 4': 32W
Connection	Linkable multi-pin AC + signal cable, bare wire feed cable
Mounting	Bolt or screw directly to surface, M4 mounting holes on each side of the fixture
Material	Aluminum
Finish	Finished aluminum, optional marine coating available
Ambient temperature range	-40° F to 122° F (-40° C to 50° C)
Ingress protection	IP66, wet location
Warranty	5 years, limited
Weight	1': 2.65 lbs (1.2 kg) 4': 10.6 lbs (4.8 kg)
Dimensions	See page 4
Certifications	 

PROJECT

FIRM

ORDER #

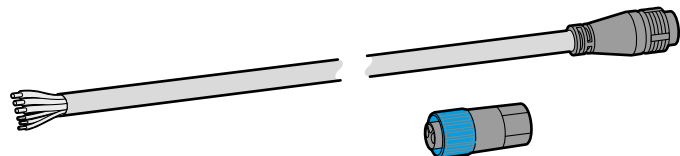
TYPE

QTY

Related components

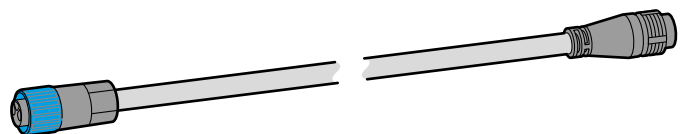
Cables

Feed cables (inc terminator)



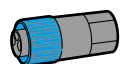
10' (3m) **H6FC10**
50' (15.2m) **H6FC50**

Link cables



1' (30cm) **H6LC1**
5' (1.5m) **H6LC5**
10' (3m) **H6LC10**

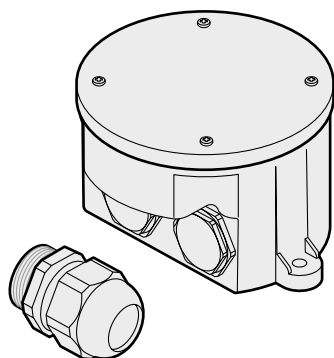
Terminator (end cap)



Terminator **H6EC**

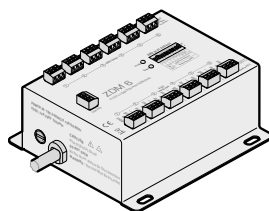
Connection accessory

IP66 junction box (plus outlet cable gland)



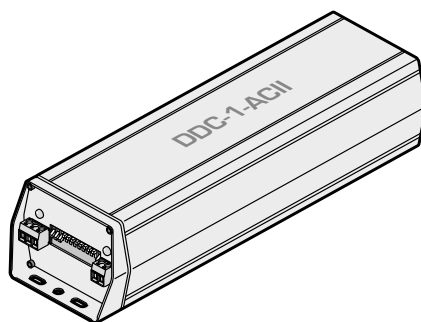
Part # **AJBOX1**
IP66 NEC compliant high+low voltage junction box
1/2" conduit inputs for AC + DMX, 3/4" conduit for H6FC#
Built-in AC surge protection up to 10kV & 10kA
Suitable for 120-277VAC runs.

Signal protocol converters (see page 6)



0-10V multiple channel converter

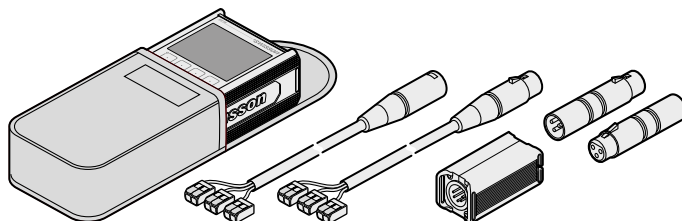
ZDM 6



DALI multiple channel converter

DDC 1AC

Test and configuration tool kit



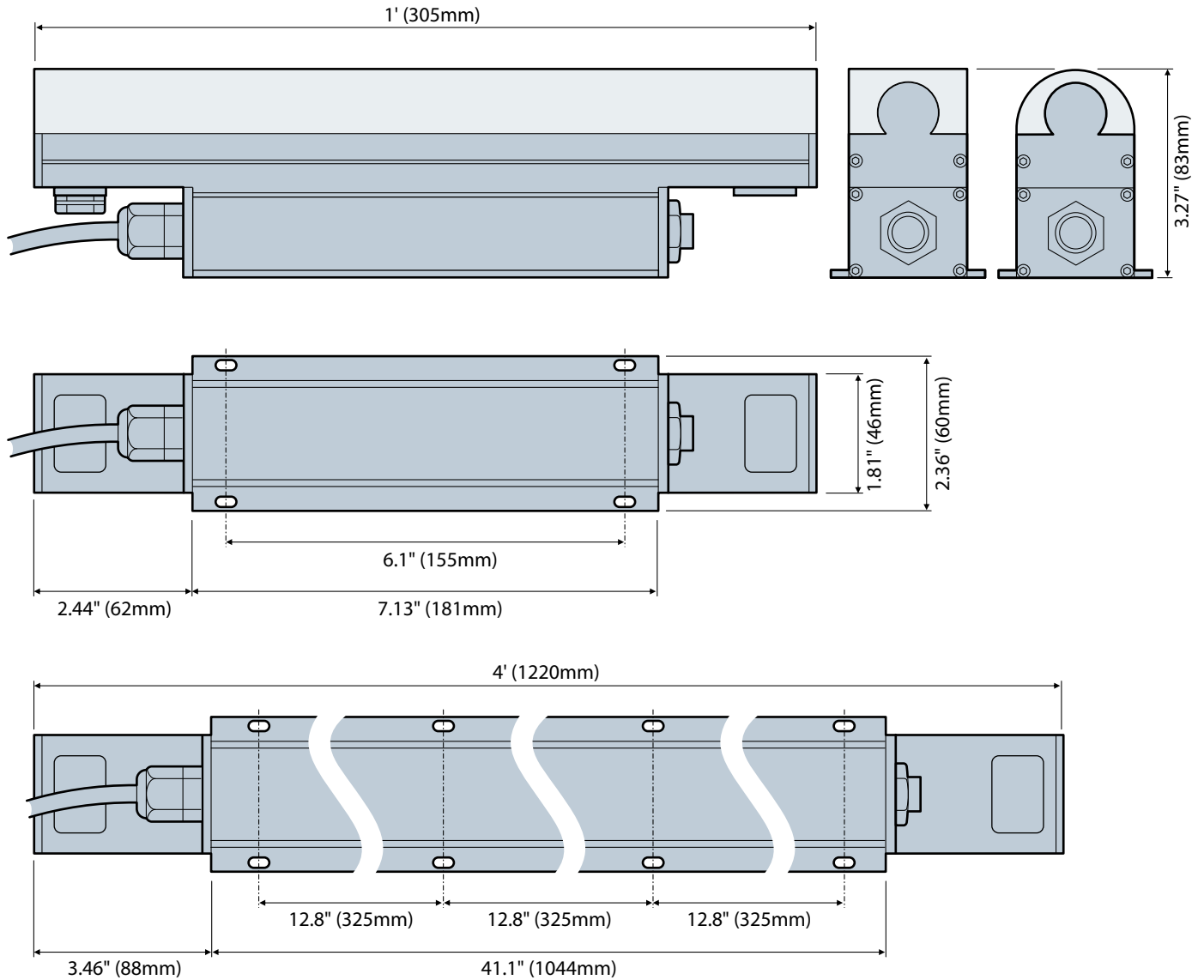
XMT-500

DMX/RDM, ArtNet and sACN test/configuration tool with cable dangle, 3/5-pin converters, bare cable connectors and pouch



PROJECT	FIRM	ORDER #	TYPE	QTY
---------	------	---------	------	-----

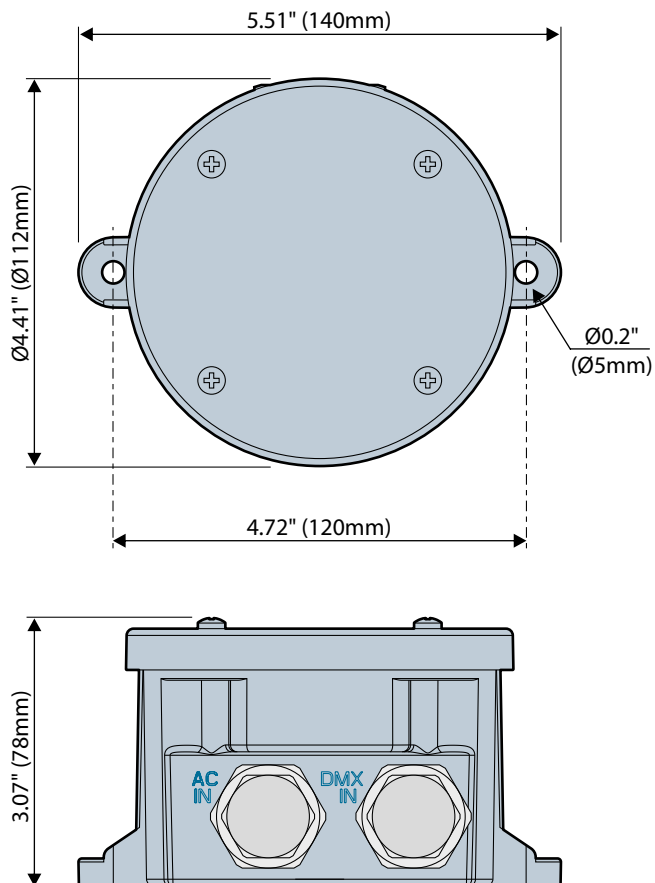
Dimensions



PROJECT	FIRM	ORDER #	TYPE	QTY
---------	------	---------	------	-----

Dimensions

AJBOX1



PROJECT

FIRM

ORDER #

TYPE

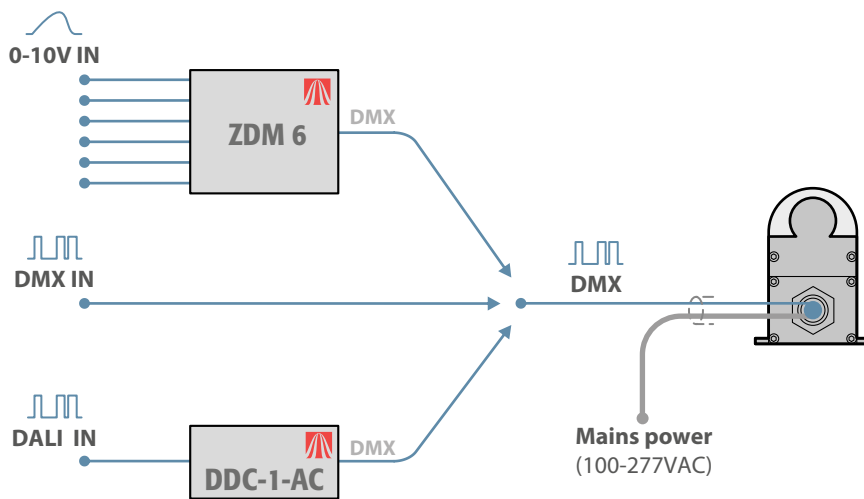
QTY

Using other control inputs

Pixel Bar fixtures use DMX as their native control method, however, it is possible to use other common control protocols when required, such as 0-10V (source or sink) or DALI.

Control inputs via converters

- DMX - connect a DMX input directly to the feed cable.
- 0-10V - use an Acclaim Lighting ZDM 6 to convert one or more analog control feeds into a combined DMX feed.
- DALI - use an Acclaim Lighting DDC-1-AC to convert one or more DALI channels into a combined DMX feed.



When using Acclaim Lighting ZDM 6 or DDC-1-AC modules it is possible to convert multiple inputs into separate DMX channels within a consolidated feed - thus allowing multiple Pixel Bar fixtures to be uniquely addressed. The ZDM 6 can convert up to six 0-10V inputs into DMX channels, whereas the DDC-1-AC can convert a maximum of 64 DALI channels (although large numbers of channels are not recommended due to the timing limitations of the DALI standard).

For full installation details, please refer to the **user guide**, available for free download here:

