

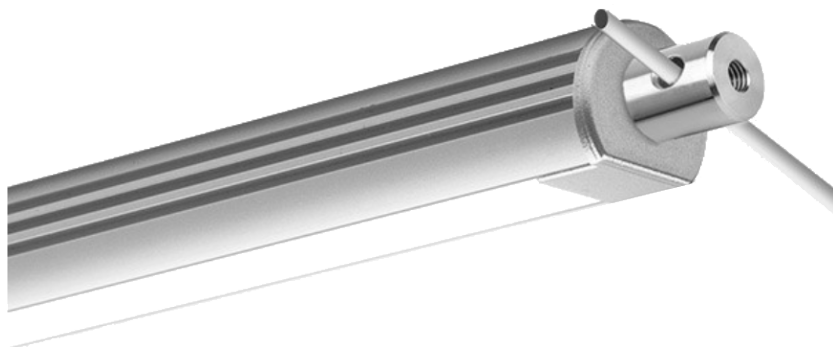
PROJECT

FIRM

ORDER #

TYPE

QTY



Flex Pendant Channel is a low profile double-anodized aluminum extrusion for mounting Acclaim interior Flex tapes. It can be suspended either from steel rods, stainless steel wire or alternatively surface mounted using brackets.

A range of matching polycarbonate lenses, end caps and mounts are available to best serve different installations. Channels and lenses are available in 3.28' (1m) lengths.

At a glance



Temperature

32° F to 104° F
0° C to 40° C

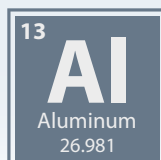


Protection

IP20
Dry location



Material



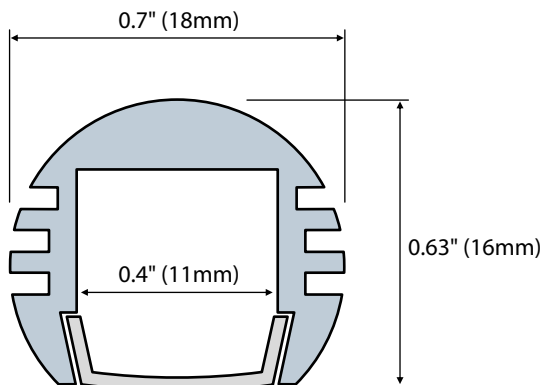
Compatible with:

Ai Flex Interior
Flex Eco Interior
Flex One SO Interior
Flex One HO Interior

Order code

FLK PEN 3.28' (1m) length

Dimensions



PROJECT

FIRM

ORDER #

TYPE

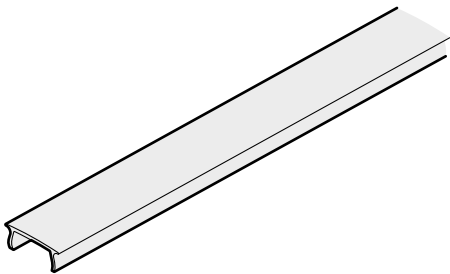
QTY

Specifications

Length	3.28' (1m), cut to length as required
Material	Double anodized aluminum, optional polycarbonate lenses
Ambient temperature range	32° F to 104° F (0° C to 40° C)
Ingress protection	IP22, dry location
Mounting	Via optional stainless steel mount brackets
Weight	0.52 lbs (0.23 kg)
Warranty	3 years, limited

Related components

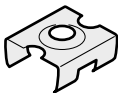
Lenses - 3.28' (1m) in length



Clear
Frosted (50% diffusion)
Opal (100% diffusion)

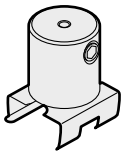
FLK MFC
FLK MFL
FLK MOL

Mounts



Stainless steel mounting bracket

FLK SMB



Conductive fastener

FLK PEN CF

End caps



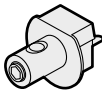
Solid end cap

FLK PEN EC



End cap with hole

FLK PEN ECH



Conductive end cap

FLK PEN CEC

Steel suspension wire and rods

S. steel wire, 3.28' (1m)
Steel rod, 1.64' (0.5m)
Steel rod, 3.28' (1m)

FLK PEN SSW1
FLK PEN SR05
FLK PEN SR1

