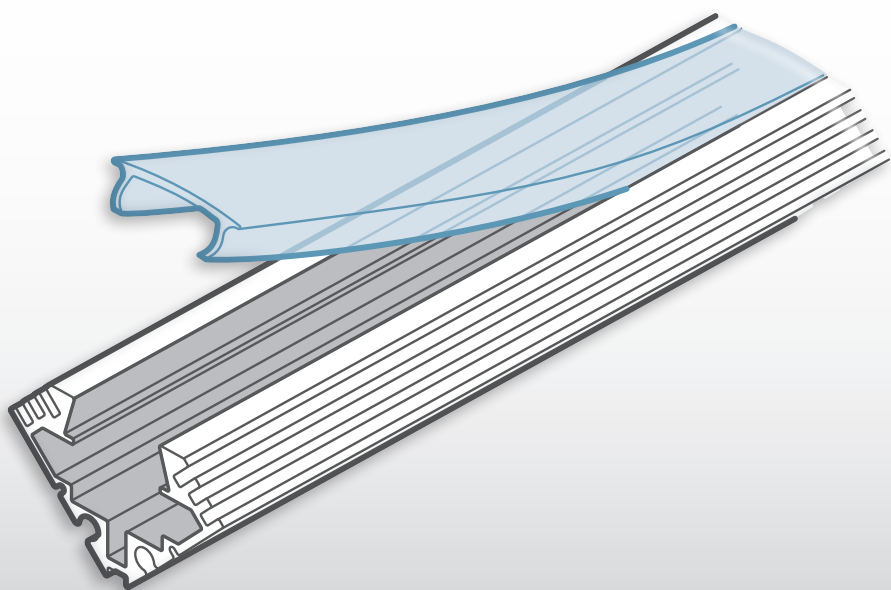




Acclaim™



Flex 45 Degree Channel

User guide

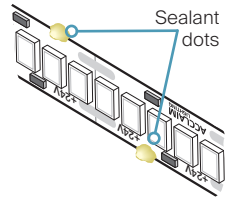
Installation

Mounting

Flex Interior tapes are supplied with 3M™ VHB acrylic adhesive backing, protected by a peel-off paper liner. To ensure that good adhesion is achieved, ensure the mounting surface is free of grease, moisture and any contaminants.

When mounting on the sides or undersides of surfaces

We recommend that you add small dots of silicone sealant along both sides of the Flex tape (to overlap the tape edge and mounting surface) using Dow Corning® 799, 1199 or equivalent. This will provide additional stability and help to prevent any separation of the tape from the mounting surface over time. The silicone dots are best applied once the tape is fixed in place; then the whole installation should not be disturbed until it the sealant has fully cured.



Cleaning and preparing the mounting surface

Most substrates are best prepared by cleaning with a 50:50 mixture of isopropyl alcohol (IPA) and water* prior to applying the tape. Exceptions to this general procedure that may require additional surface preparation include:

Heavy oils

A degreaser or solvent-based cleaner* (such as 3M™ Prep Solvent 70, 3M™ Citrus Base Cleaner, mineral spirits, naphtha or similar, subject to suitability for the surface material) may be required to remove heavy oil or grease from a surface and should be followed by cleaning with IPA/water*.

Other contamination or oxidation

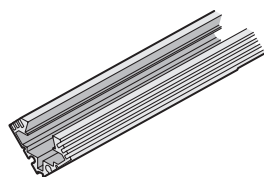
Abrading a surface, followed by cleaning with IPA/water*, can remove heavy dirt or oxidation (e.g. galvanized steel) and can increase surface area to improve adhesion. Abrasion often also helps adhesion to paints and plastics. Very small scratches in the surface, generated with circular motion rather than straight-line motion, are most desirable.

** Note: These cleaner solutions contain greater than 250 g/l of volatile organic compounds (VOC). Please consult your local Air Quality Regulations to be sure the cleaner is compliant. When using solvents, be sure to follow the manufacturer's precautions and directions for use when handling such materials.*

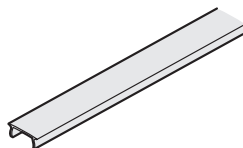
Flex 45 degree channel (FLX 45D)

This low profile channel holds the Flex tape at 45 degrees to the mounting surface. The channel can be wall or ceiling mounted. Clear, frosted and opal lens options are available.

Options



Flex 45 degree channel
(3.28'/1m or 6.56'/2m)
[FLX 45D ##]



Lenses (3.28'/1m or 6.56'/2m)
[Clear: FLX 45D CL ##]
[Frosted: FLX 45D FL ##]
[Opal: FLX 45D OL ##]



Mount clip
[FLX 45D MC]



End cap with hole
[FLX 45D ECH]



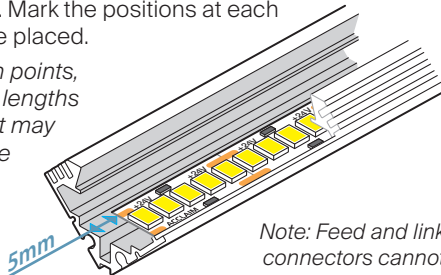
End cap
[FLX 45D EC]

To fit the Flex tape

- 1 If necessary, cut the channel to the length required. Ensure that any resulting burrs are removed.
- 2 Ensure the tape mounting surface within the channel is completely dry, clean and free of grease.
- 3 Determine the length of tape required. Leave at least a 5mm gap at each end to allow the end caps to be inserted. Mark the positions at each end of the channel where the tape will be placed.

Note: Flex tape can be cut only at certain points, which may slightly constrain the precise lengths of tape that can be achieved. Therefore it may be beneficial to center the tape within the channel to achieve an even distribution.

- 4 Cut the tape to the nearest marked cutpoint.
- 5 Begin peeling the backing from the Flex tape and carefully stick the tape into the channel, starting at the marked position.

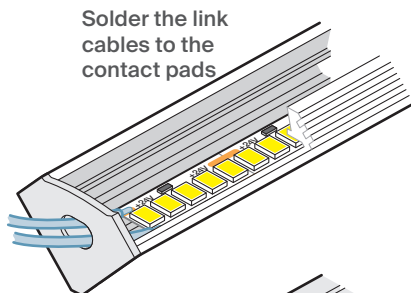


Note: Feed and link connectors cannot be fitted inside this channel.

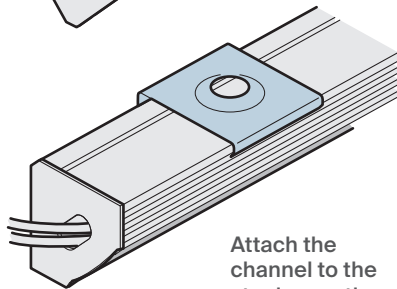
IMPORTANT: While pressing the Flex tape into position, take care not to put excessive pressure on the components or connections.

To surface mount

- 1 Fit the Flex tape to the channel (see Page 2).
- 2 At the end where the connection will take place, fit an *End cap with hole*.
- 3 Feed the link cables through the end cap and carefully solder to the contact pads, if necessary.
- 4 At the other end of the channel, fit a standard *End cap*.
- 5 Fit the required lens (see below).
- 6 Attach two or more *mount clips* to the mounting surface using screws appropriate to the surface type.
- 7 Clip the channel into the mounting brackets using the slots shown here:



Solder the link cables to the contact pads

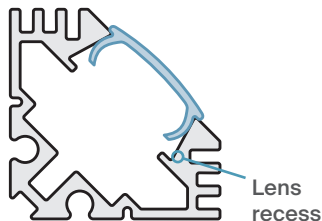


Attach the channel to the steel mounting brackets

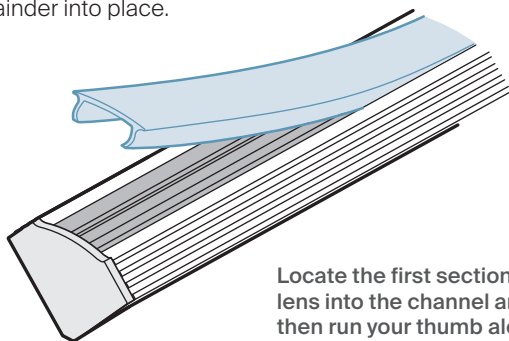
Note: Ensure sufficient strain relief where the cables enter the channel.

To fit a lens

- 1 Measure the exact length of lens required between the end caps at each end of the channel.
- 2 Carefully cut the lens to length. Ensure that any resulting burrs are removed.
- 3 Insert one end of the lens against one of the end caps so that it locates into the 'Lens recess' within the channel (see right).
- 4 Once the first part of the lens has correctly located, run your thumb gently along the length of the lens to push the remainder into place.



Lens recess



Locate the first section of lens into the channel and then run your thumb along it to push the remainder into place.

Dimensions

