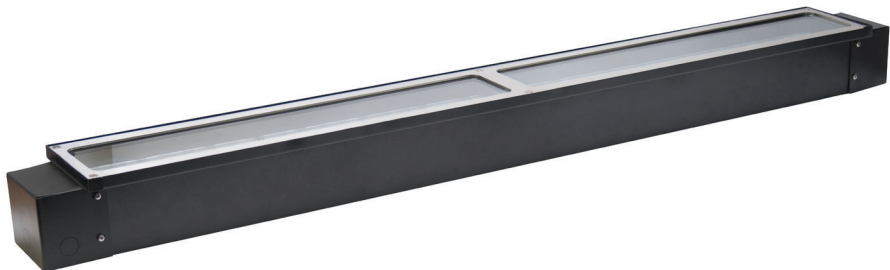


Dyna Exterior In-Grade System

ACCLAIM
LIGHTING



Client:

Project:

Type:

Order Code:

Quantity:

The **Dyna Exterior In-Grade System** allows you to place Dyna Graze or Dyna Cove Exterior runs directly in dirt or concrete. Troughs are constructed of epoxy coated stainless steel, with 3/8" (10mm) tempered glass, and brushed stainless steel trims.

The flow-through design allows air circulation to keep the fixture cool and maintain optimum fixture life. Removable glass allows for easy access to the fixtures once installed.

Compatible with:
Dyna Graze Exterior HO or DMX
Dyna Cove Exterior HO

Specifications

Available Lengths	2' (61cm), 4' (122cm), 8' (244cm)
Mounting Surfaces	Concrete or dirt
Drainage	12" x 12" (30cm x 30cm) Gravel bed below enclosures, by others
Enclosure Type	Flow-through
Warranty	5 Years
Housing	Epoxy coated (black) stainless steel, 3/8" tempered glass
Pressure Rating	Walk over approved
Weight	12 lbs (2'), 22 lbs (4'), 42 lbs (8')
Dimensions	L: 24"/48"/96" W: 5.5" D: 4.22" (L: 609/1220/2439mm W: 102mm D: 49.9mm)

Order Codes

DIG #

Length:

2 = 2' (61 cm)

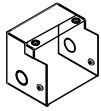
4 = 4' (122cm)

8 = 8' (244cm)

Dyna Exterior In-Grade System

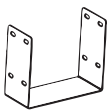
ACCLAIM
LIGHTING

Related Components



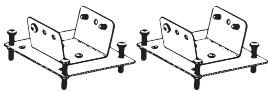
DIGEC

*End cap with conduit knockouts for Dyna exterior in-grade system
Two required per continuous run*



DIGJB

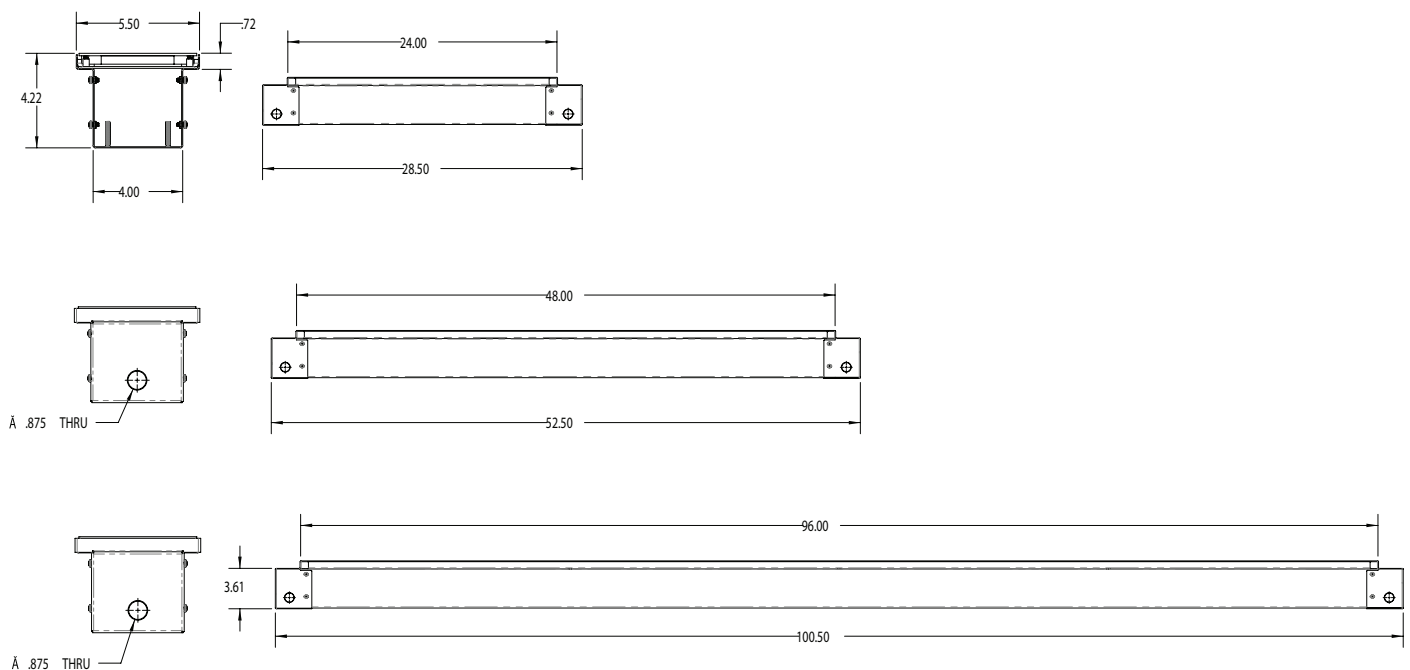
*Joiner bracket for Dyna exterior in-grade system
Joins two sections of trough together*



DIGFMP

*Pair of fixture mounts for Dyna exterior in-grade system
One pair required per fixture*

Dimensions



Dyna Exterior In-Grade System

ACCLAIM
LIGHTING

System Configuration

