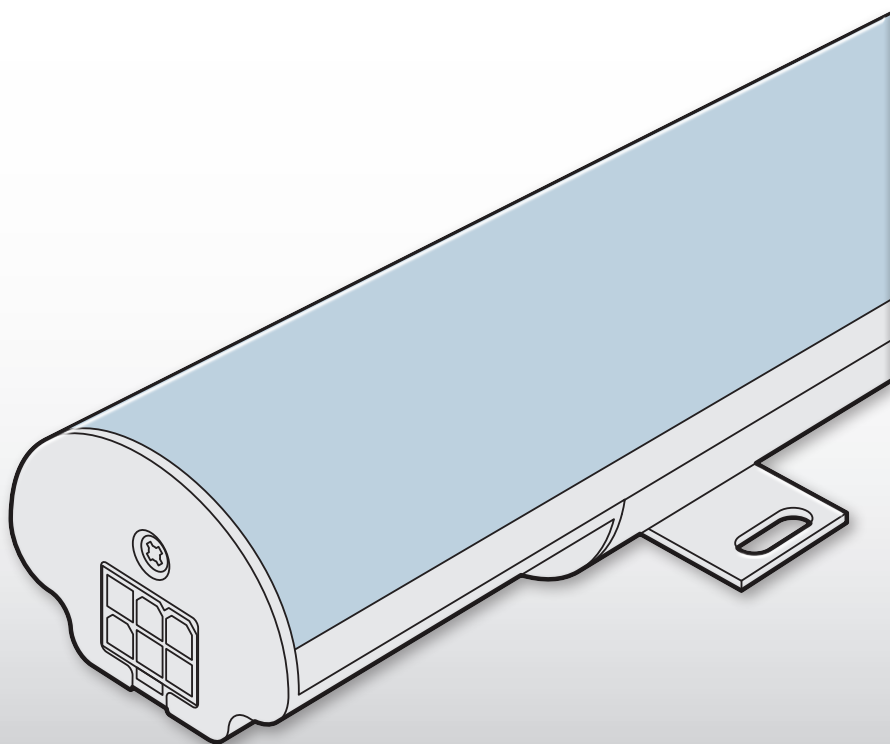




Acclaim™



Adapt Cove™

User guide

Contents

- Introduction.....2**
 - Welcome 2
 - Safety 2
 - Supplied items 3
 - Optional extras 3
- Installation.....4**
 - Mounting 4
 - Mount adjustment 4
 - Optional 90 degree mount 5
 - Feed in cabling 6
 - Maximum number of fixtures 7
 - Interconnecting 8
 - Optional DMX operation (via UDM) 9
 - Optional wireless DMX operation (via UDM•W) 9
 - Optional wireless 0-10V operation (via UDM and Aria) 10
- Operation.....11**
 - Color temperature selection 11
- Further information.....12**
 - Specifications 12
 - Limited product warranty 13

Introduction

Welcome

Welcome to the Adapt Cove range from Acclaim Lighting. Available in 1' and 4' lengths, these low power, low cost LED fixtures feature on board selection of four different white color temperatures ranging from 2400K to 3500K.

Separate Adapt Cove fixtures are available for use with three distinct voltage levels:

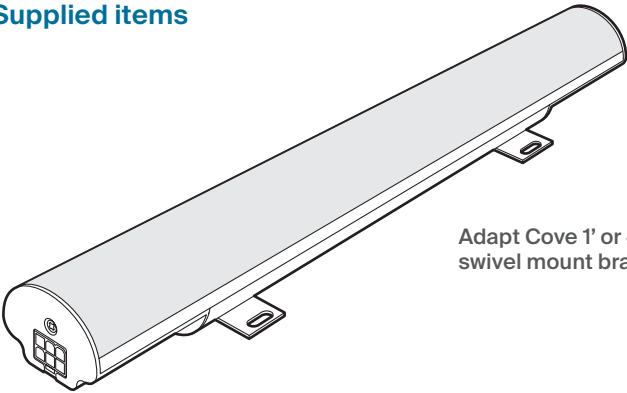
- 120VAC,
- 220-240VAC, or
- 277VAC

Adapt Cove fixtures can be directly connected in series up to lengths of 80 feet (24m) to greatly simplify installation. Power and 0-10V (sink) dimming control are combined within the feed cable and are jointly passed from fixture to fixture when connected in series.

Safety

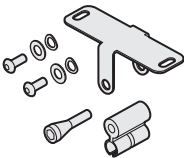
- Ensure that the power input is supplied from a correctly fused, earthed and environmentally protected location.

Supplied items

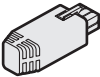


Adapt Cove 1' or 4' with two swivel mount brackets

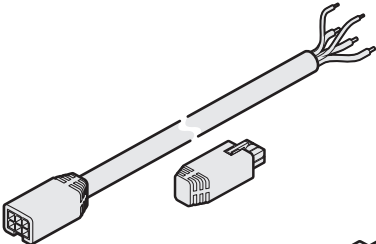
Optional extras



90° bracket (single)
[AIC90]
(Sold as single units)

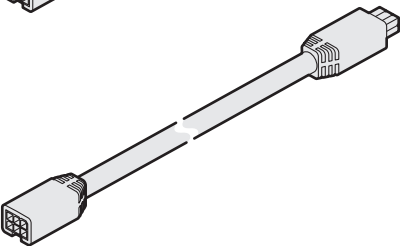


End cap
[APCEC]



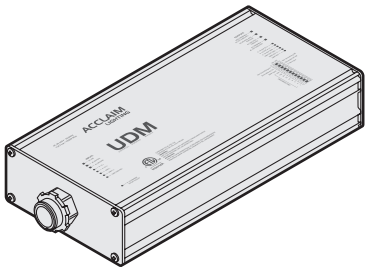
Feed cable + end cap

10' (3m) [APCFC10]
50' (15m) [APCFC50]



Link cables

1' (30cm) [APCLC1]
5' (1.5m) [APCLC5]
10' (3m) [APCLC10]



Universal Dimming Module
[UDM]

Universal Dimming Module with Aria wireless
[UDM-W]

For DMX applications only - see page 9

Installation

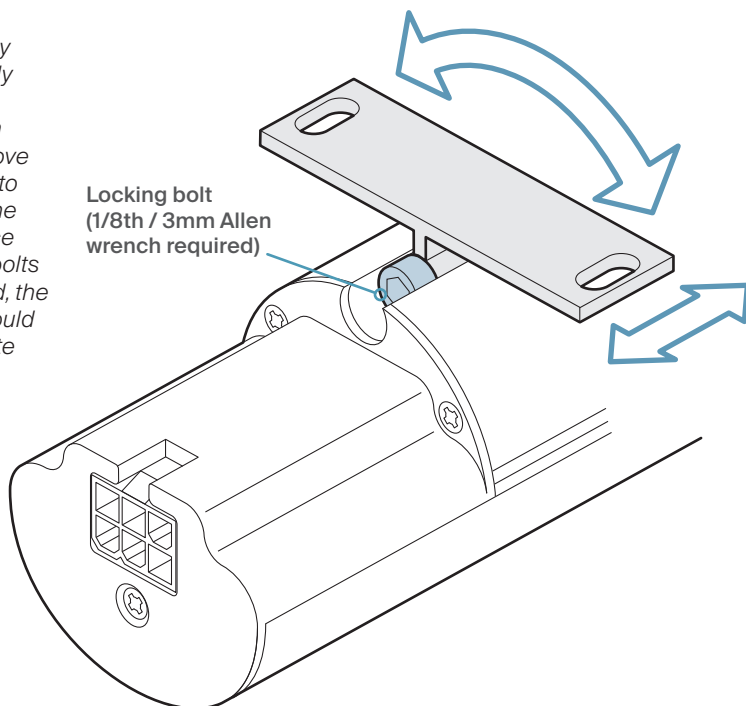
When installing each Adapt Cove fixture, ensure that the surface is level. Suitable mounting surfaces include steel, aluminum, concrete or wood structures.

Mounting

Each mount bracket has two slots measuring 0.39" x 0.18" (10 x 4.5mm) and the base has a thickness of 0.08" (2mm). Select bolts or screws (not supplied) that fit the mount bracket base(s) correctly and are particularly suited to the mounting surface.

Ensure that each mount bracket is securely fixed to the mounting surface with appropriate screws/bolts. If necessary, use a 1/8th (3mm) Allen wrench to loosen each mount bracket to allow them to slide along the length of the fixture to the required position before re-tightening.

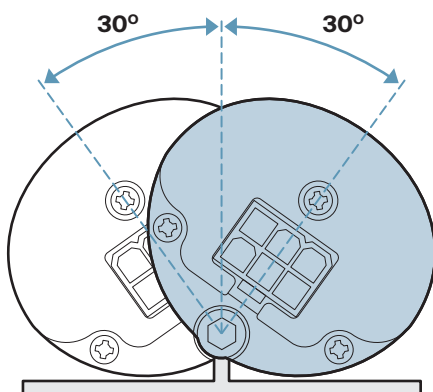
Note: It may be necessary to temporarily remove the mounts from the Adapt Cove unit in order to fix them to the surface. Once the locking bolts are loosened, the brackets should slide out quite easily.



Mount adjustment

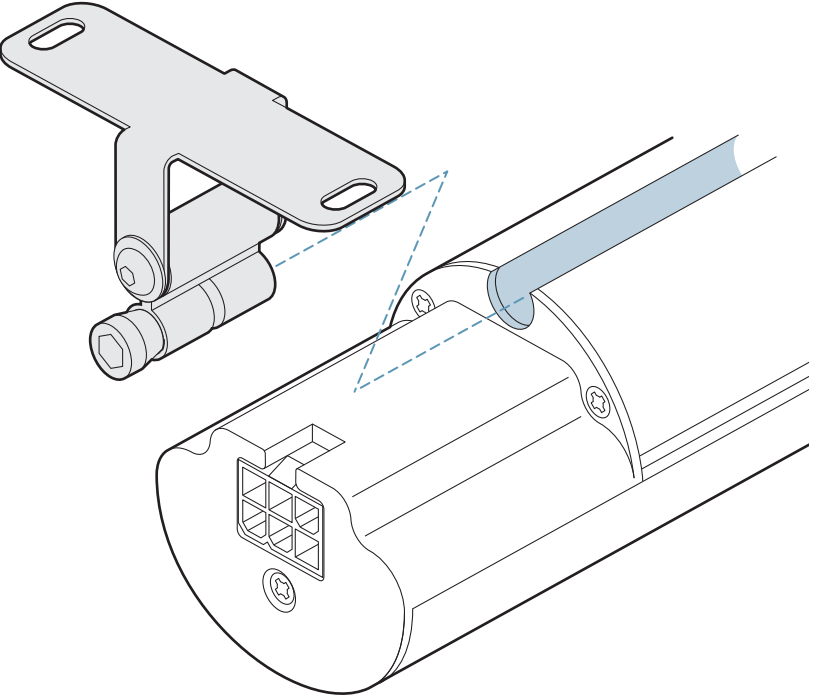
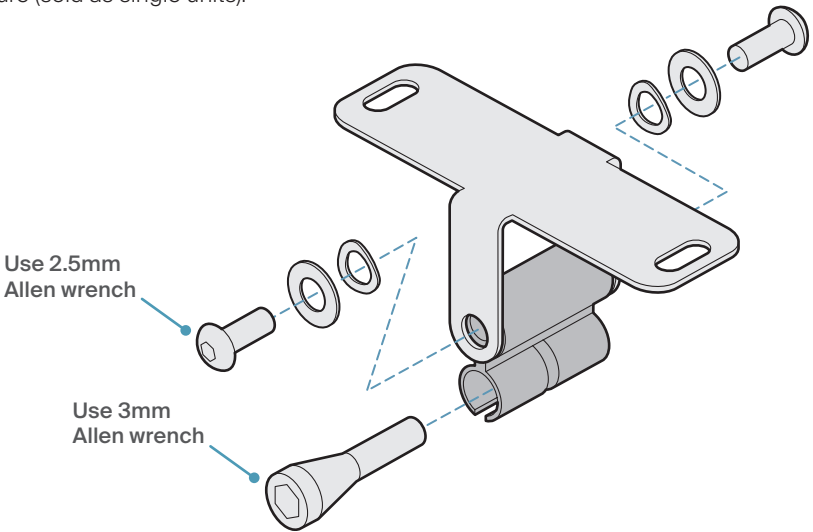
The two standard swivel mount bracket(s) supplied attached to each Adapt Cove fixture allow tilt angles, in both directions, of roughly 30 degrees from vertical to be achieved. Use a 1/8th (3mm) Allen wrench to adjust the tilt angle.

Optional brackets that allow tilt angles up to 90 degrees from vertical [Part#: AIC90] are also available. See next page.



Optional 90 degree mount

The optional 90 degree mounts are supplied in a disassembled state and require both 2.5mm and 3mm Allen wrenches to assemble. Two brackets are required per fixture (sold as single units).

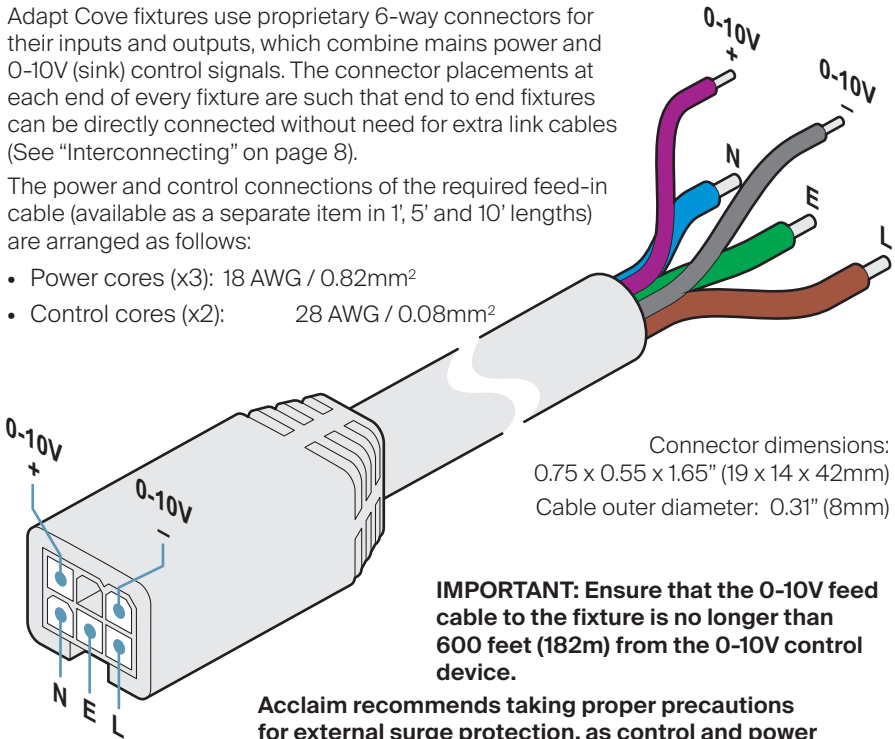


Feed in cabling

Adapt Cove fixtures use proprietary 6-way connectors for their inputs and outputs, which combine mains power and 0-10V (sink) control signals. The connector placements at each end of every fixture are such that end to end fixtures can be directly connected without need for extra link cables (See "Interconnecting" on page 8).

The power and control connections of the required feed-in cable (available as a separate item in 1', 5' and 10' lengths) are arranged as follows:

- Power cores (x3): 18 AWG / 0.82mm²
- Control cores (x2): 28 AWG / 0.08mm²



Connector dimensions:
0.75 x 0.55 x 1.65" (19 x 14 x 42mm)
Cable outer diameter: 0.31" (8mm)

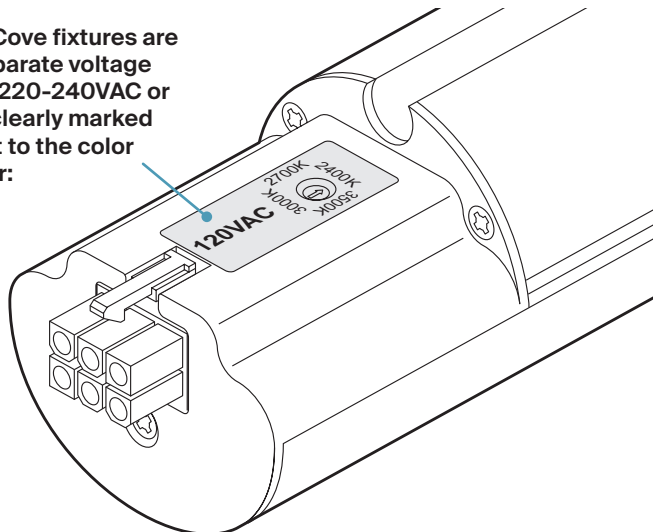
IMPORTANT: Ensure that the 0-10V feed cable to the fixture is no longer than 600 feet (182m) from the 0-10V control device.

Acclaim recommends taking proper precautions for external surge protection, as control and power electronics can be damaged by major events.

IMPORTANT: These connectors are not rated for live connection or disconnection. Check that power is isolated before making or breaking any links. Ensure the connectors have locked and are seated correctly before applying power.

IMPORTANT: Adapt Cove fixtures are available in three separate voltage categories: 120VAC, 220-240VAC or 277VAC - which are clearly marked on the label adjacent to the color temperature selector:

Ensure the input voltage does not exceed the stated rating of the fixtures.



Feed in cabling protection

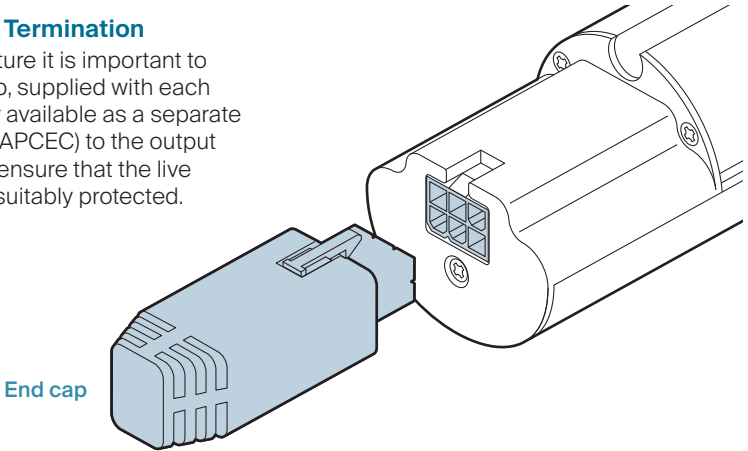
Ensure that appropriate care is taken to protect the junction where the mains and control inputs are joined to the fixture's feed in cable(s).

Ensure that:

- the mains input is derived from a suitable overload-protected supply.
- only suitable cable connectors are used within the junction boxes; Acclaim Lighting recommends Wago® 221-series splicing connectors (or similar).
- local codes are followed during planning and installation. Some municipalities have specific requirements when wiring low and high voltage cables in close proximity. Such requirements could include the use of a barrier within combined junction boxes (if used) or particular minimum spacings between the control and power cables.
- connections are made, inspected and certified by a qualified electrician.

Final fixture Termination

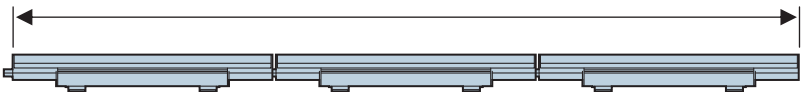
At the final fixture it is important to fit the end cap, supplied with each feed cable (or available as a separate item - part #: APCEC) to the output connector to ensure that the live contacts are suitably protected.



Maximum number of fixtures

The maximum number of fixtures that can be connected in a single series is 80 feet (24m):

Maximum length of Adapt Cove fixtures:
Up to 80 feet (24m)



Runs can consist of mixtures of 1' and 4' fixtures, as required, providing the total length of fixtures is not exceeded.

Ensure that the 0-10V feed cable to the fixture is no longer than 600 feet (182m) from the 0-10V control device.

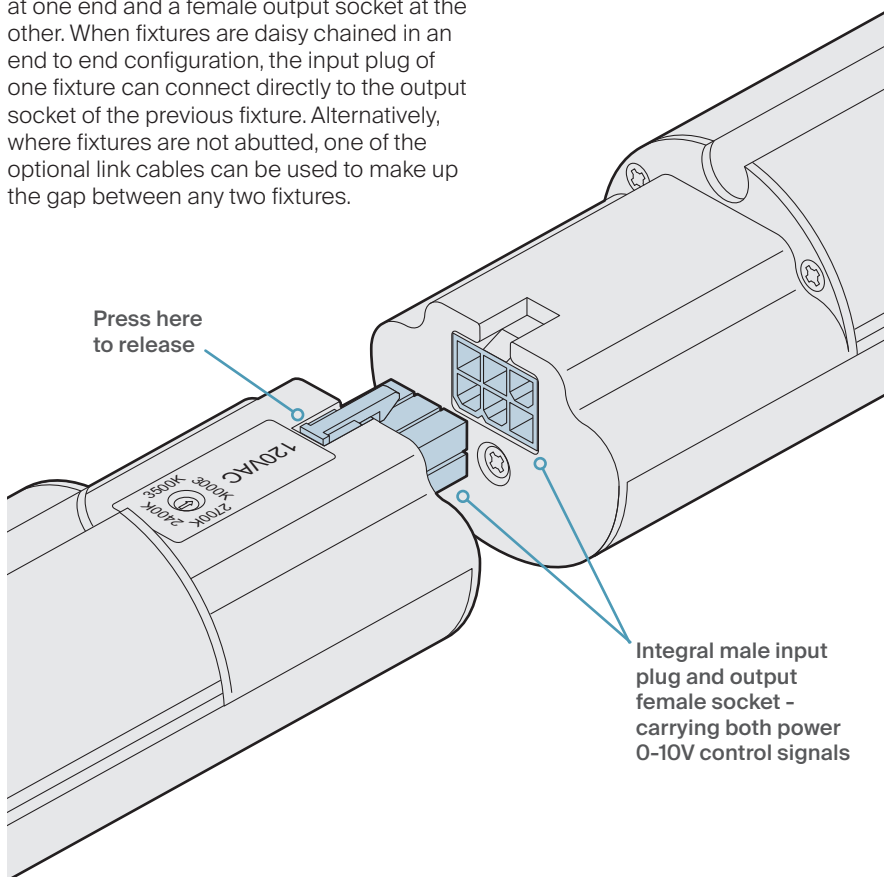
Fixture power requirements

- 1' models: 5W
- 4' models: 20W

See "Interconnecting" on page 8.

Interconnecting

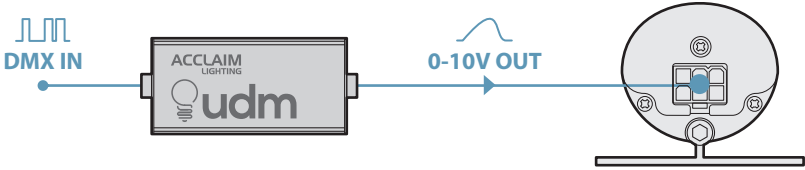
Each Adapt Cove fixture has a male input plug at one end and a female output socket at the other. When fixtures are daisy chained in an end to end configuration, the input plug of one fixture can connect directly to the output socket of the previous fixture. Alternatively, where fixtures are not abutted, one of the optional link cables can be used to make up the gap between any two fixtures.



IMPORTANT: Do not exceed the stated maximum fixtures in a daisy chain. See "Maximum number of fixtures" on page 7.

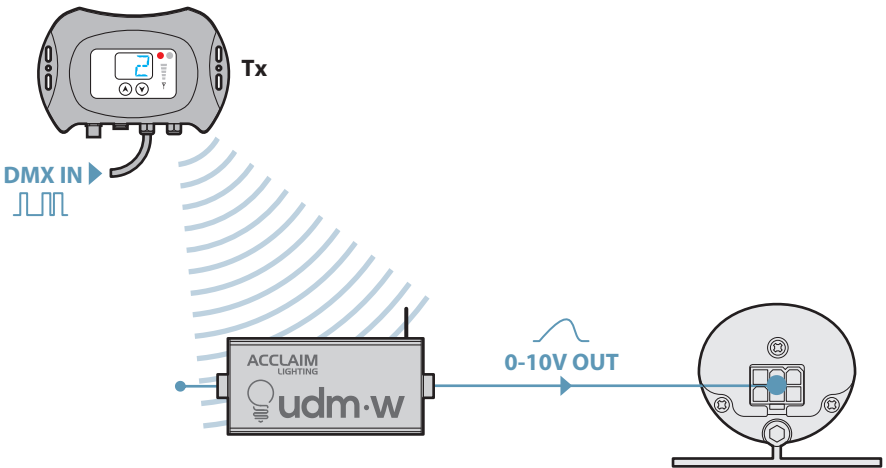
Optional DMX operation (via UDM)

Adapt Cove fixtures operate using a 0-10V (sink) control signal input. Where DMX control is required, the optional Acclaim Lighting UDM device is available to perform the necessary signal conversion:



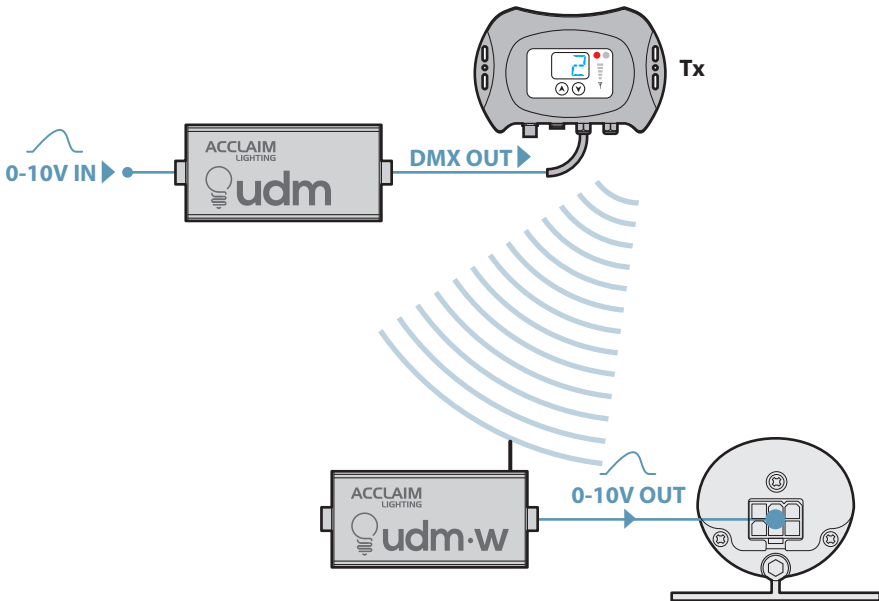
Optional wireless DMX operation (via UDM•W)

In addition to performing DMX to 0-10V signal conversions, the optional UDM•W also adds Aria™ wireless linking over distances up to 2600 feet (792m) line of sight (when coupled with an Aria transmitter [TX]):



Optional wireless 0-10V operation (via UDM and Aria)

Using a combination of Acclaim Lighting UDM, Aria and UDM•W units it is possible to transmit a 0-10V input wirelessly over distances up to 2600 feet (792m) line of sight to the Adapt Cove installation:

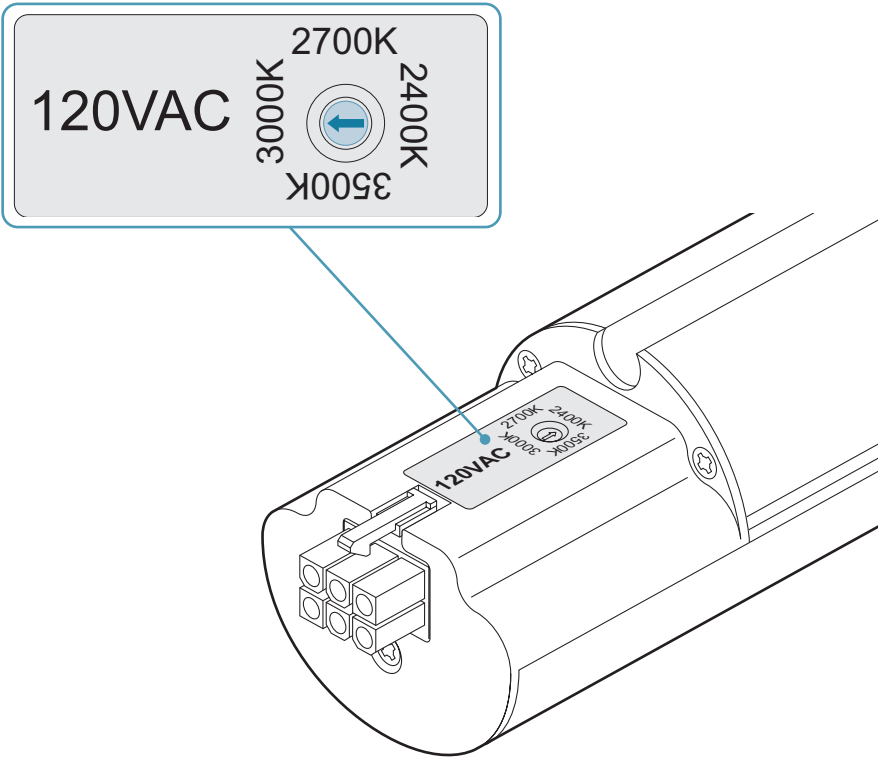


Operation

Color temperature selection

Each Adapt Cove fixture contains LED emitters with four different color temperatures. The required color temperature is selected using the small rotary switch at the feed-in end of each fixture and its setting can be changed regardless of whether the fixture is powered on and dimmed up or down. Adjusting the color temperature in the field by a licenced electrician is acceptable and will not void the warranty.

Use a small flatblade screwdriver to engage with the recessed rotary switch. The switch can be rotated in either direction:

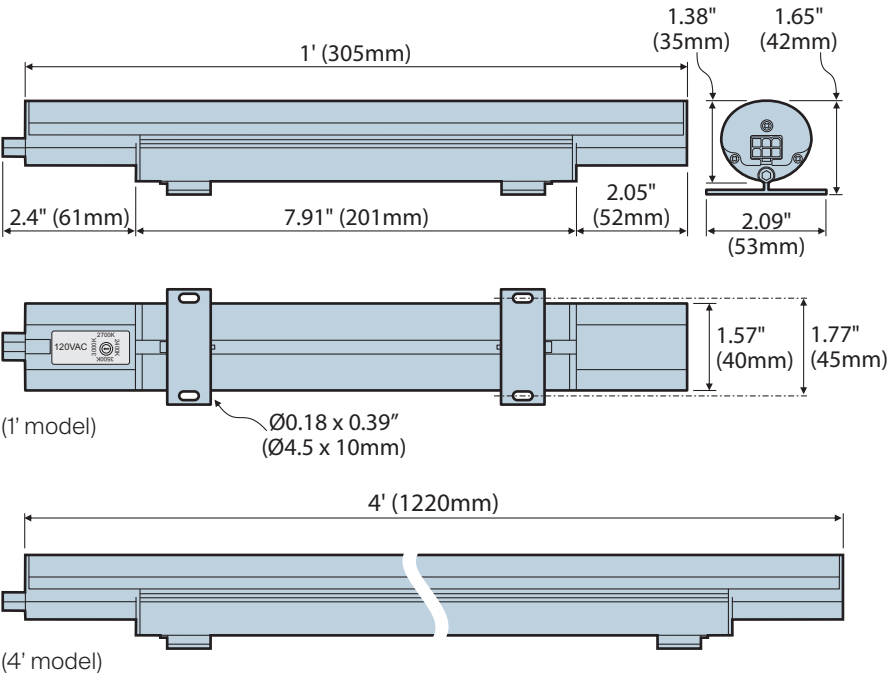


Further information

Specifications

Correlated Color Temp	Selectable via switch: 2400K, 2700K, 3000K and 3500K
Beam angle	120°
Lumen maintenance (L ₇₀)	150,000 hours (25°C)
Control	0-100% 0-10V (sink) internal, DMX via external UDM module
Maximum lengths in series	80' (24m)
Ingress protection	IP20, dry location
Operating voltage	120VAC, 240VAC or 277VAC
Power consumption	5W (1' model), 20W (4' model)
Connectors	Attached 5 conductor AC + 0-10V input and socket output
Housing	Aluminum body with polycarbonate lens
Finish	White
Mounting	30° swivel mounts included, 90° swivel mounts optional
Operating temperature	-4°F to 113°F (-20°C to 45°C)
Weight	0.4 lbs/0.18 kg (1' model), 1.6 lbs/0.73 kg (4' model)

Certifications



Limited product warranty

A. Acclaim Lighting™ hereby warrants, to the original purchaser, Acclaim Lighting finished products to be free of manufacturing defects in material and workmanship for a standard period of:

- Fixtures: 5 Years (1,825 days) from the date of purchase.
- Drivers, power supplies and accessories: 5 Years (1,825 days) from the date of purchase.
- Flex Products: 3 Years (1,095 days) from the date of purchase.
- Controllers: 2 Years (730 days) from the date of purchase.

It is the owner's responsibility to establish the date and place of purchase and warranty terms by acceptable evidence, at the time service is sought.

B. For warranty service, send the product only to the Acclaim factory. All shipping charges must be pre-paid. If the requested repairs or service (including parts replacement) are within the terms of this warranty, Acclaim Lighting will pay return shipping charges only to a designated point within the United States. If the entire instrument is sent, it must be shipped in its original package. No accessories should be shipped with the product. If any accessories are shipped with the product, Acclaim Lighting shall have no liability whatsoever for loss of or damage to any such accessories, nor for the safe return thereof. Acclaim reserves the right to replace the item with same or similar product at its discretion.

C. This warranty is void if the serial number has been altered or removed; if the product is modified in any manner which Acclaim concludes, after inspection, affects the reliability of the product; if the product has been repaired or serviced by anyone other than the Acclaim Lighting factory unless prior written authorization was issued to purchaser by Acclaim Lighting; if the product is damaged because not properly maintained as set forth in the instruction manual.

D. This is not a service contract, and this warranty does not include maintenance, cleaning or periodic check-up nor do we guarantee as part of this warranty any lumen performance during period. Parts not covered by this warranty include: fuses, external power supplies, third party items not manufactured by Acclaim Lighting. During the period specified above, Acclaim Lighting will replace defective parts at its expense, and will absorb all expenses for warranty service and repair labor by reason of defects in material or workmanship. The sole responsibility of Acclaim Lighting under this warranty shall be limited to the repair of the product, or replacement thereof, including parts, at the sole discretion of Acclaim Lighting. At no time will installation or re-installation or products labor or liability costs will be assumed by Acclaim Lighting. All products covered by this warranty were manufactured after January 1, 2012, and bear identifying serial number marks to that effect.

E. Acclaim Lighting reserves the right to make changes in design and/or improvements upon its products without any obligation to include these changes in any products theretofore manufactured. No warranty, whether expressed or implied, is given or made with respect to any accessory supplied with products describe above. Except to the extent prohibited by applicable law, all implied warranties made by Acclaim Lighting in connection with this product, including warranties of merchantability or fitness, are limited in duration to the warranty period set forth above. And no warranties, whether expressed or implied, including warranties of merchantability or fitness, shall apply to this product after said period has expired.

F. Marine or extreme weather location applications using Acclaim lighting products are subject to a 2 year limited warranty and Acclaim must be notified prior to delivery of units for such applications so that preventative treatment can be made to the products to ensure proper performance and product life with a special marine code coating / sealing process at an additional cost.

G. The consumer's and or dealer's sole remedy shall be such repair or replacement as is expressly provide above; and under no circumstances shall Acclaim Lighting be liable for any loss or damage, direct or consequential, arising out of the use of, or inability to use, this product. This warranty is the only written warranty applicable to Acclaim Lighting products and supersedes all prior warranties and written descriptions of warranty terms and conditions heretofore published.

