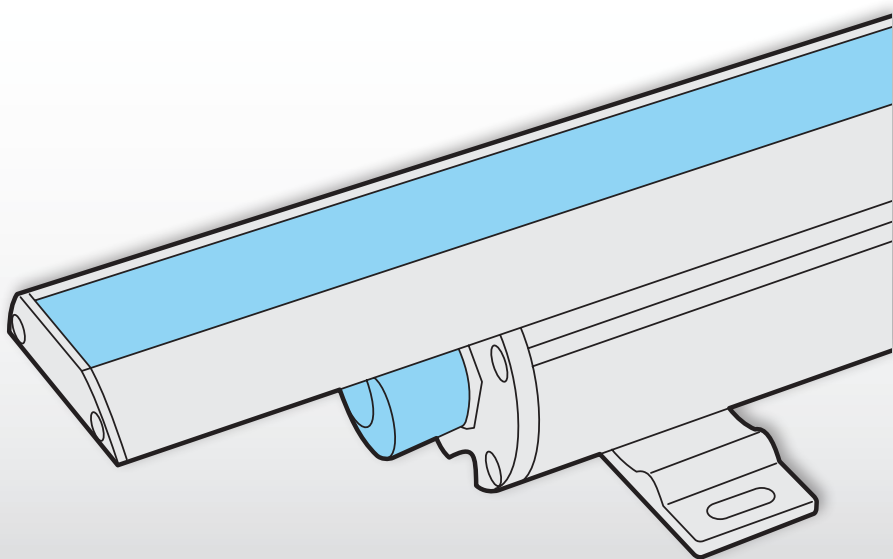


Spectrum™
TECHNOLOGY



AL Cove DMX

CONTENTS

- INTRODUCTION2
 - Welcome 2
 - Safety 2
 - Supplied items 3
 - Optional extras 3
- INSTALLATION4
 - Mounting 4
 - Mount adjustment 4
 - Power cabling 5
 - Interconnecting 5
 - Maximum number of fixtures 5
- OPERATION6
 - Addressing fixtures 6
 - DMX personality mode selection 7
 - Testing emitter output 9
- FURTHER INFORMATION10
 - Specifications 10
 - Limited product warranty 11

INTRODUCTION

WELCOME

Welcome to the AL Cove DMX range from Acclaim Lighting. These compact, aluminum bodied, dry location (IP20) fixtures are available in 1' and 4' lengths, are designed specifically to graze surfaces in close proximity. AL Cove DMX fixtures benefit from internal auto-ranging power units and can be fed via AC voltage supplies in the range 100 to 277V. These fixtures are controlled by an external DMX input, using separate channels for each emitter color. RDM (Remote Device Management) is used via the DMX link to configure the addressing and mode options (see page 6). To simplify installation, AL Cove DMX fixtures can be directly connected in series up to lengths of 100 feet (30m) when used with 120VAC inputs or up to 200 feet (60m) when used with 230/277V supplies.

AL Cove DMX fixtures are available in a range of color types:

- RGB,
- QW (RGBW), or
- Dynamic White (2700K-5500K).

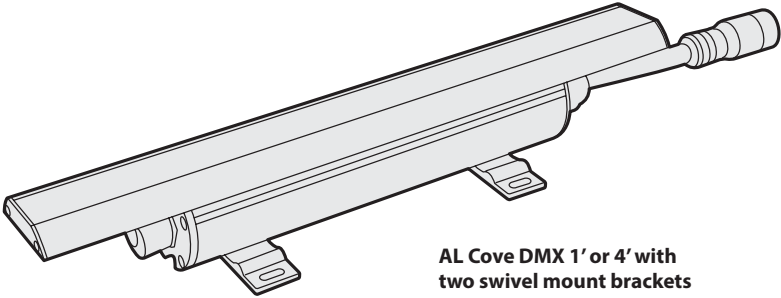
Each color option is available in two power levels:

- SO: 280 lumens per foot, or
- EO: 140 lumens per foot.

SAFETY

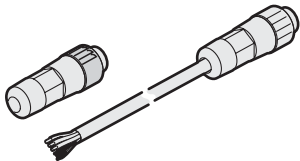
- Ensure that the power input is supplied from a correctly fused, earthed and environmentally protected location.

SUPPLIED ITEMS



**AL Cove DMX 1' or 4' with
two swivel mount brackets**

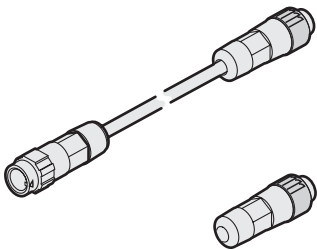
OPTIONAL EXTRAS



Feed cables plus end cap (terminator)

10' (3m)
50' (15m)

[H6FC10]
[H6FC50]



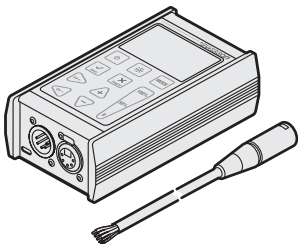
Link cables

1' (30cm)
5' (1.5m)
10' (3m)

[H6LC1]
[H6LC5]
[H6LC10]

End cap (terminator)

[H6EC]



**DMX/RDM tool plus
male 5pin XLR lead**

[XMT350]

INSTALLATION

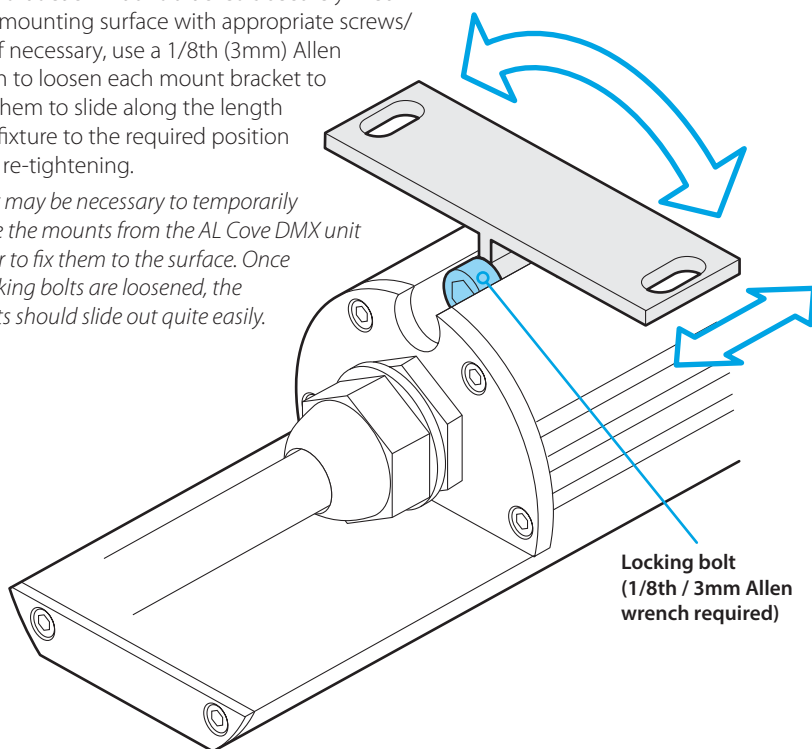
When installing each AL Cove DMX fixture, ensure that the surface is level and that nothing is protruding to damage the mounting bracket(s). Suitable mounting surfaces include steel, aluminum, concrete or wood structures.

MOUNTING

Each mount bracket has two slots measuring 0.39" x 0.18" (10 x 4.5mm) and the base has a thickness of 0.08" (2mm). Select bolts or screws (not supplied) that fit the mount bracket base(s) correctly and are particularly suited to the mounting surface.

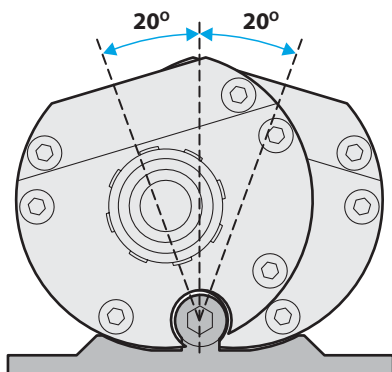
Ensure that each mount bracket is securely fixed to the mounting surface with appropriate screws/bolts. If necessary, use a 1/8th (3mm) Allen wrench to loosen each mount bracket to allow them to slide along the length of the fixture to the required position before re-tightening.

Note: It may be necessary to temporarily remove the mounts from the AL Cove DMX unit in order to fix them to the surface. Once the locking bolts are loosened, the brackets should slide out quite easily.



MOUNT ADJUSTMENT

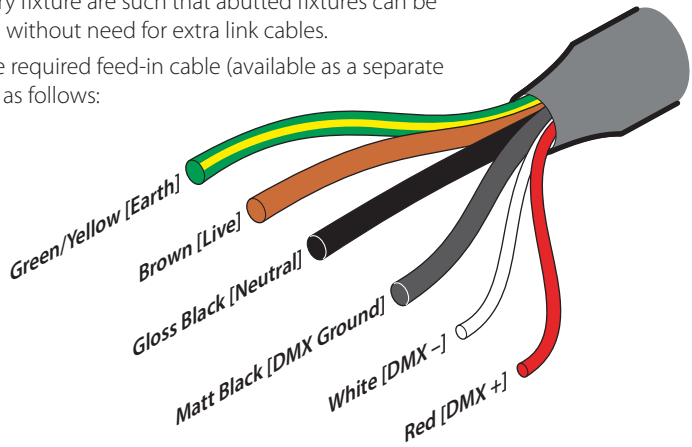
The two swivel mount brackets attached to each AL Cove DMX fixture allow tilt angles, in both directions, of roughly 20 degrees from vertical to be achieved. Use a 1/8th (3mm) Allen wrench to adjust the tilt angle.



POWER CABLING

AL Cove DMX fixtures use proprietary 3+5 pin connectors (mains plus DMX) for their inputs and outputs. The connector placements at each end of every fixture are such that abutted fixtures can be directly connected without need for extra link cables.

The contacts of the required feed-in cable (available as a separate item) are arranged as follows:



INTERCONNECTING

Each AL Cove DMX fixture has a short cabled power input plug at one end and an integral power output socket at the other. When fixtures are daisy chained (and are directly abutted), the input plug of one fixture can connect directly to the output socket of the previous fixture. Alternatively, where fixtures are not abutted, one of the optional link cables can be used to make up the gap between any two fixtures.

Note: Ensure that the mains power is supplied from a suitably protected source and initial connections are made within IP rated enclosures.

Note: Acclaim requires Belden 9842 or approved equivalent for all DMX wiring applications.

Acclaim recommends taking proper precautions for external surge protection, as control and power electronics can be damaged by major events.

IMPORTANT: These connectors are not rated for live connection or disconnection. Check that power is isolated before making or breaking any links. Ensure the connectors have locked and are seated correctly before applying power.

IMPORTANT: Do not exceed the stated maximum fixtures in a daisy chain. See "Maximum number of fixtures" below.

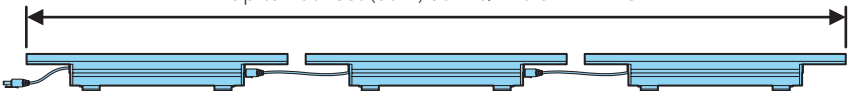
MAXIMUM NUMBER OF FIXTURES

The maximum number of fixtures that can be connected in a single series is determined by the supply voltage:

Maximum length of AL Cove DMX fixtures:

Up to 100 feet (30m) at 120VAC

Up to 200 feet (60m) at 220/240 or 277VAC



Runs can consist of mixtures of 1' and 4' fixtures, as required, providing the total length of fixtures is not exceeded.

OPERATION

ADDRESSING FIXTURES

AL Cove DMX fixtures have no external controls and instead rely on RDM (Remote Device Management) for all configuration via the DMX interface. This allows multiple devices to be configured either before or after installation.

Note: Each AL Cove DMX fixture is supplied with its DMX address set to 1 by default.

Various third party DMX/RDM tools are available; we recommend the Acclaim Lighting XMT-350 tool for this task.

TO ADDRESS FIXTURES USING THE XMT-350 TOOL

- 1 Connect the XMT-350 to the DMX input line of either a single fixture or multiple fixtures in a pre-arranged daisy chain configuration.
- 2 Power on the fixture(s) and the XMT-350.
- 3 On the XMT-350, press the **MODE** button, then use the arrow buttons to highlight the **RDM** function and press the **✓** button to select. The XMT-350 will search for RDM devices and after a short while the XMT-350 will display a list of all located fixtures:

MAIN	PATCH	OPTIONS	004/004
AL COVE AC DMX			001
AL COVE AC DMX			005
AL COVE AC DMX			009
AL COVE AC DMX			012

The fixture that is highlighted within the list should begin flashing its emitters to identify itself.

- 4 On the XMT-350, press the right arrow button to change to the **PATCH** tab:

MAIN	PATCH	OPTIONS	004/004
▶ RESTART PATCHING			
AL COVE AC DMX			(001)
AL COVE AC DMX			005
AL COVE AC DMX			009
AL COVE AC DMX			012

Note: DMX addresses shown in brackets, e.g. (001), have been temporarily assigned by the XMT-350, but are not yet stored within the fixture(s).

- 5 If necessary, use the up/down buttons to choose an alternative fixture.
- 6 Press the **✓** button to set the address for the currently highlighted fixture:

ACTUAL ADDRESS:	001
PATCH TO ADDRESS:	001
✓ OK	✗ CANCEL

- 7 Use the up/down buttons to set the required DMX address and then press the **✓** button to store it within the fixture.
- 8 The highlight will automatically move to the next fixture so that you can address it. Repeat steps 5 to 7 until all fixtures are addressed.

DMX PERSONALITY MODE SELECTION

AL Cove DMX models have numerous modes of operation which are determined by the DMX Personality setting. The various personality settings and their effects on the emitters for each model type are listed here:

Settings	1' models	4' models
001 DMX 8RGBW	2 cells, 4 ch's each (RGBW)	8 cells, 4 ch's each (RGBW)
002 DMX 8RGB	2 cells, 3 ch's each (RGB)	8 cells, 3 ch's each (RGB)
003 DMX 8WWCW	2 cells, 2 ch's each (WW + CW)	8 cells, 2 ch's each (WW + CW)
004 DMX 8CH	2 cells, 1 channel each (W)	8 cells, 1 channel each (W)
005 DMX 4RGBW	1 cell, 4 channels (RGBW)	4 cells, 4 ch's each (RGBW)
006 DMX 4RGB	1 cell, 3 channels (RGB)	4 cells, 3 ch's each (RGB)
007 DMX 4WWCW	1 cell, 2 channels (WW + CW)	4 cells, 2 ch's each (WW + CW)
008 DMX 4CH	1 cell, 1 channel (W)	4 cells, 1 channel each (W)
009 DMX 2RGBW	1 cell, 4 channels (RGBW)	2 cells, 4 ch's each (RGBW)
010 DMX 2RGB	1 cell, 3 channels (RGB)	2 cells, 3 ch's each (RGB)
011 DMX 2WWCW	1 cell, 2 channels (WW + CW)	2 cells, 2 ch's each (WW + CW)
012 DMX 2CH	1 cell, 1 channel (W)	2 cells, 1 channel each (W)
013 DMX 1RGBW	1 cell, 4 channels (RGBW)	1 cell, 4 channels (RGBW)
014 DMX 1RGB	1 cell, 3 channels (RGB)	1 cell, 3 channels (RGB)
015 DMX 1WWCW	1 cell, 2 channels (WW + CW)	1 cell, 2 channels (WW + CW)
016 DMX 1CH	1 cell, 1 channel (W)	1 cell, 1 channel (W)
017 MANUAL RGBW	1 cell, reserved for future use	1 cell, reserved for future use
018 PROGRAM	1 cell, color chase	1 cell, color chase

Note: In each case the 'cell' values indicate the number of individually controlled sections the fixture is split into.

Using an RDM (Remote Device Management) tool, you can quickly change between the various operation modes. Various third party DMX/RDM tools are available; we recommend the Acclaim Lighting XMT-350 tool for this task. The chosen mode will determine how many DMX channels are required to control the fixture. For instance, *DMX 8RGBW* mode on a 4' QW model will require 32 (8 x 4) DMX channels to operate.

(continued)

TO CHANGE PERSONALITY MODES USING THE XMT-350 TOOL

- 1 Connect the XMT-350 to the DMX input line of either a single fixture or multiple fixtures in a pre-arranged daisy chain configuration.
- 2 Power on the fixture(s) and the XMT-350.
- 3 On the XMT-350, press the **MODE** button, then use the arrow buttons to highlight the **RDM** function and press the **✓** button to select. The XMT-350 will search for RDM devices and after a short while the XMT-350 will display a list of all located fixtures:

MAIN	PATCH	OPTIONS	004/004
AL COVE AC DMX			001
AL COVE AC DMX			005
AL COVE AC DMX			009
AL COVE AC DMX			012

The fixture that is highlighted within the list should begin flashing its emitters to identify itself.

- 4 If necessary, use the up/down buttons to highlight an alternative fixture.
- 5 On the XMT-350, press the **✓** button to view details for the chosen fixture and then use the down button to highlight the **DMX PERSONALITY** entry:

AL COVE AC DMX	
▶ LABEL:	AL COVE DMX
MODEL:	AL COVE AC DMX
MAN:	ACCLAIM LIGHTING
DMX START ADDRESS:	001
DMX PERSONALITY:	DMX 4RGBW
DMX SLOTS:	4

- 6 Press the **✓** button to view the personality options:

AL COVE AC DMX	
001:	DMX 8RGBW
002:	DMX 8RGB
003:	DMX 8WWCW
004:	DMX 8CH
005:	DMX 4RGBW
006:	DMX 4RGB

- 7 Use the up/down buttons to highlight the required personality and then press the **✓** button to store it within the fixture. See the modes list on page 7.
- 8 Press the **✕** button to return to the previous screen.

TESTING EMITTER OUTPUT

After you have addressed each AL Cove DMX fixture we recommend that you also test each one prior to installation. This can be achieved with your RDM (Remote Device Management) tool. Various third party DMX/RDM tools are available; we recommend the Acclaim Lighting XMT-350 tool for this task.

TO TEST EMITTER OUTPUT USING THE XMT-350 TOOL

- 1 Connect the XMT-350 to the DMX input line of either a single fixture or multiple fixtures in a pre-arranged daisy chain configuration.
- 2 Power on the fixture(s) and the XMT-350.
- 3 On the XMT-350, press the **MODE** button, then use the arrow buttons to highlight the **SEND** function and press the **✓** button to select.



- 4 Use the arrow buttons to determine the DMX output:
 - Use the left and right buttons to choose the DMX address,
 - Use the up and down buttons to increase/decrease the level at the chosen address.

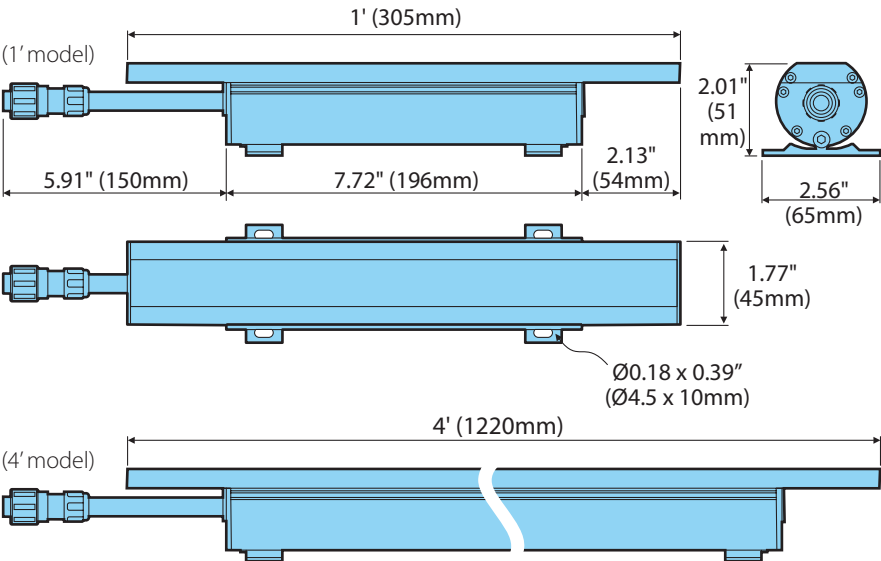
*Note: If you wish to send DMX values to all addresses simultaneously (rather than cycling through them individually), when the XMT-350 is showing address 001, press the left button once to change to **ALL CHANNELS**. Now when you set the level it will affect all emitters equally.*

FURTHER INFORMATION

SPECIFICATIONS

Color	RGB, QW w/ Spectrum Technology (RGB + 3000K white) or Dynamic White (2700K - 5500K)
Beam angle	110°
Total Lumens	SO: 280 lm per foot EO: 140 lm per foot
Lumen maintenance (L ₇₀)	150,000 hours (25°C)
Control	DMX/RDM
Maximum lengths in series	100' (30m) @ 120VAC, 200' (60m) @ 240VAC
Ingress protection	IP20, dry location
Operating voltage	120VAC, 240VAC or 277VAC
Power consumption	SO: 12W (1' model), 48W (4' model) EO: 5W (1' model), 20W (4' model)
Connectors	Attached multipin 6 conductor AC + DMX lead
Housing	Aluminum body with polycarbonate lens
Finish	Gray standard, black, white or custom optional
Mounting	20° swivel mounts included
Operating temperature	-4°F to 113°F (-20°C to 45°C)
Weight	1 lb/0.45 kg (1' model), 4 lbs/1.81 kg (4' model)

Certifications



LIMITED PRODUCT WARRANTY

A. Acclaim Lighting™ hereby warrants, to the original purchaser, Acclaim Lighting finished products to be free of manufacturing defects in material and workmanship for a standard period of:

- Fixtures: 5 Years (1,825 days) from the date of purchase.
- Drivers, power supplies and accessories: 5 Years (1,825 days) from the date of purchase.
- Flex Products: 3 Years (1,095 days) from the date of purchase.
- Controllers: 2 Years (730 days) from the date of purchase.

It is the owner's responsibility to establish the date and place of purchase and warranty terms by acceptable evidence, at the time service is sought.

B. For warranty service, send the product only to the Acclaim factory. All shipping charges must be pre-paid. If the requested repairs or service (including parts replacement) are within the terms of this warranty, Acclaim Lighting will pay return shipping charges only to a designated point within the United States. If the entire instrument is sent, it must be shipped in its original package. No accessories should be shipped with the product. If any accessories are shipped with the product, Acclaim Lighting shall have no liability whatsoever for loss of or damage to any such accessories, nor for the safe return thereof. Acclaim reserves the right to replace the item with same or similar product at its discretion.

C. This warranty is void if the serial number has been altered or removed; if the product is modified in any manner which Acclaim concludes, after inspection, affects the reliability of the product; if the product has been repaired or serviced by anyone other than the Acclaim Lighting factory unless prior written authorization was issued to purchaser by Acclaim Lighting; if the product is damaged because not properly maintained as set forth in the instruction manual.

D. This is not a service contract, and this warranty does not include maintenance, cleaning or periodic check-up nor do we guarantee as part of this warranty any lumen performance during period. Parts not covered by this warranty include: fuses, external power supplies, third party items not manufactured by Acclaim lighting. During the period specified above, Acclaim Lighting will replace defective parts at its expense, and will absorb all expenses for warranty service and repair labor by reason of defects in material or workmanship. The sole responsibility of Acclaim Lighting under this warranty shall be limited to the repair of the product, or replacement thereof, including parts, at the sole discretion of Acclaim Lighting. At no time will installation or re-installation or products labor or liability costs will be assumed by Acclaim Lighting. All products covered by this warranty were manufactured after January 1, 2012, and bear identifying serial number marks to that effect.

E. Acclaim Lighting reserves the right to make changes in design and/or improvements upon its products without any obligation to include these changes in any products theretofore manufactured. No warranty, whether expressed or implied, is given or made with respect to any accessory supplied with products describe above. Except to the extent prohibited by applicable law, all implied warranties made by Acclaim Lighting in connection with this product, including warranties of merchantability or fitness, are limited in duration to the warranty period set forth above. And no warranties, whether expressed or implied, including warranties of merchantability or fitness, shall apply to this product after said period has expired.

F. Marine or extreme weather location applications using Acclaim lighting products are subject to a 2 year limited warranty and Acclaim must be notified prior to delivery of units for such applications so that preventative treatment can be made to the products to ensure proper performance and product life with a special marine code coating / sealing process at an additional cost.

G. The consumer's and or dealer's sole remedy shall be such repair or replacement as is expressly provide above; and under no circumstances shall Acclaim Lighting be liable for any loss or damage, direct or consequential, arising out of the use of, or inability to use, this product. This warranty is the only written warranty applicable to Acclaim Lighting products and supersedes all prior warranties and written descriptions of warranty terms and conditions heretofore published.

www.acclaimlighting.com